

Feature Guide: TECDIS 4.7.x.25

With the release of TECDIS 4.7.x.25 we are providing you with several new features and bug fixes. For a complete list, see the release history on www.telko.no. Here you will also find Feature Guides for previous releases.

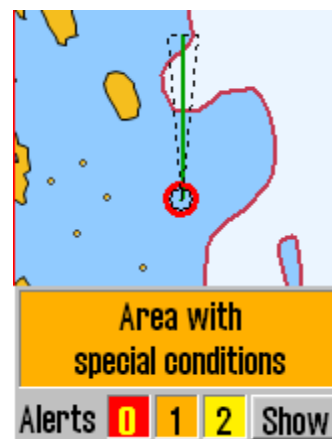
Here is a guide to the main new features and improvements to TECDIS in this release:

Important behavior change: Special Condition Areas

An important change you will experience is that *New Caution* has been renamed to **Area with Special Conditions**. This is part of changes to the Alert handling changes (see next feature).

New Caution was classified as a warning alert, while **Area with special conditions** can be set as either warning alert or caution alert by the user. *In the new alert handling, warnings emit alert sounds.*

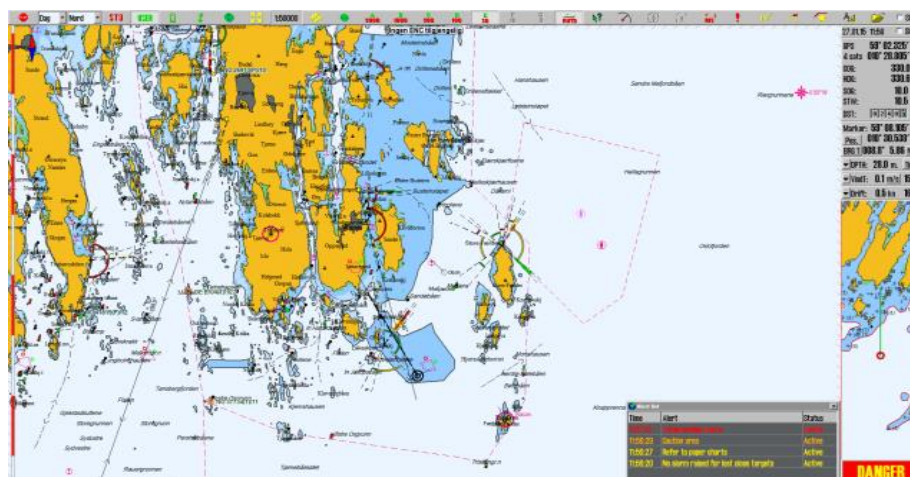
Area with special conditions includes chart caution areas and restricted areas.



*Areas with special conditions are by default classified as Warning alerts. This can be changed in the Safe menu, by deselecting the **Spec. cond. area** setting.*

Important behavior change: Alert handling

In this release we have made important changes to the alert handling in TECDIS in order to comply with updated alert handling requirements.



Most changes affect all TECDIS installations, and the most important are:

Redesigned alert field and alert counters:

Red: Alarm

Orange: Warning

Yellow: Caution

Unacknowledged alerts now blink in the alert field

Alert list		
Time	Alert	Status
11:57:13	Antigrounding Alarm	Active
11:56:29	Caution area	Active
11:56:27	Refer to paper charts	Active
11:56:20	No alarm raised for lost close targets	Active

Redesigned alert list:

One-time alerts, such as "Critical Point", behave like before, but now also appear in the *alert list* as **Active**

Alerts that are in their *Silenced* mode, appear as this in the alert list for easy identification and to avoid alert confusion

Alert sounds have been changed, to further avoid alert blindness.

The alert sound is as follows:

- Unchecked alarm(s): three short beeps, repeated every 8th second
- Unchecked warning(s): two short beeps, repeated every 4,8 minutes

New and changed alerts

A list of all alerts and when to expect them will be presented in the TECDIS User Manual version 3.25

Chart license alerts have changed:

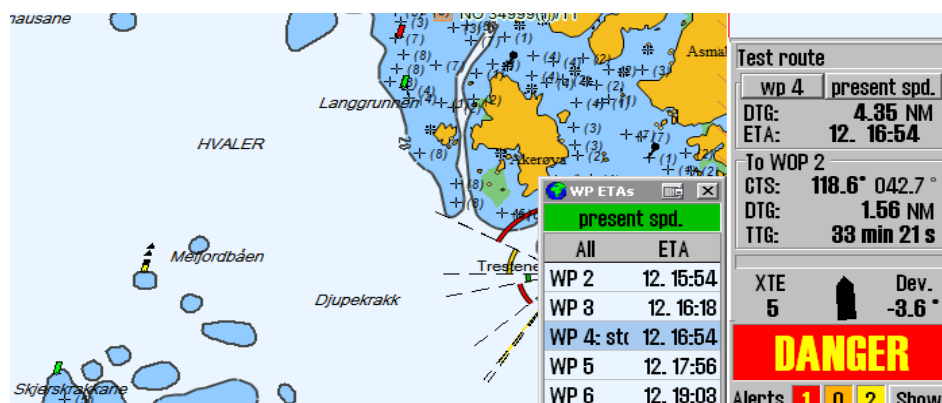
From now on you only get alerts if more than half your chart licenses expire in the coming 14 days/have expired in the last month.

Alert management in TECDIS 2424

Communication to alarm central as standard is not included in TECDIS 2424.

Major improvement: ETA handling

With version 4.7.x.25 we have made big changes to the ETA tools in TECDIS, and they are now more integrated and powerful than ever before.



The biggest change is the addition of an **ETA list**, showing the current ETA times for all your waypoints. The list view can be customized to show you:

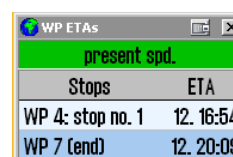
- All waypoints, with ETA
- Waypoints with text descriptions, and their ETA
- Waypoints with delays (i.e. all stops you have planned), and their ETA

by clicking on the title (All, text, stop)

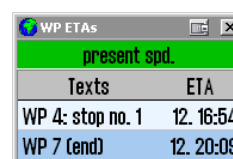
The displayed ETA can also be switched between:

- ETA in the same time zone as the TECDIS
- ETA in the UTC time zone
- ETA in the time zone of the route

by clicking on the ETA title



Stops	ETA
WP 4: stop no. 1	12. 16:54
WP 7 (end)	12. 20:09



Texts	ETA
WP 4: stop no. 1	12. 16:54
WP 7 (end)	12. 20:09

By clicking on the waypoints in the ETA list, you also select them as your ETA point. And if you right click on two of waypoints in the list, you will activate the ETA calculator.

In addition, these customizations are transferred to the other ETA tools, such as the ETA calculator and the ETA display in the route monitoring. You can also switch from present speed to planned speed, and the change will appear in all places.

Based on user feedback we have also highlighted the present speed setting with a green background.



New feature: Track control with Raytheon Anschütz NP5500

One of three major updates in this release is the addition of the Anschütz NP5500 autopilot to our Track control system.

The autopilot complies with the IEC 62065 edition 2 Standard.



Existing feature explained: “ETA is wrong”

Some users are experiencing that their ETA times are incorrect. This happens when a route leg has custom values set in the route planner.

When a route leg has a custom speed setting of 15 knots in the route planner, and the rest of the route is set to standard speed, the value will be used for ETA calculations, both for planned and present speed ETA.

We advise all users to use the custom route leg values only for those route legs which are in waters with speed restrictions.

Test route 7 wp 14.2 NM 1 hr 10 min													
	wp	GC	Lat.	Lon.	Dist.	Course	Speed	Lane	Turn	ROT	Time	Delay	Text / Options / Keyboard
Default	1	→	59° 06.536' N	010° 34.607' E	2.5 NM	118.6°	12.0 kn	0.10 NM	---	---	12: 11:30	---	
Spd. 12.0	2	→	59° 06.357' N	010° 38.816' E	1.1 NM	042.7°	12.0 kn	0.10 NM	0.10 NM	115°/min	12: 11:42	---	
Lane 0.10	3	→	59° 06.148' N	010° 40.238' E	1.7 NM	010.9°	14.0 kn	0.05 NM	0.20 NM	67°/min	12: 11:48	---	
Turn 0.10	4	→	59° 07.775' N	010° 40.847' E	2.8 NM	000.6°	12.0 kn	0.10 NM	0.10 NM	184°/min	12: 11:56	1 min	
	5	→	59° 10.622' N	010° 40.905' E	3.1 NM	338.6°	12.0 kn	0.10 NM	0.10 NM	115°/min	12: 12:10	---	
✓ Lane ✓ Info	6	→	59° 13.436' N	010° 38.177' E	3.0 NM	344.1°	12.0 kn	0.10 NM	0.10 NM	115°/min	12: 12:26	---	
Zone -2	7	---	59° 16.349' N	010° 36.552' E	---	---	---	---	---	---	12: 12:41	---	

For example; if you sail at 15 knots, and your route is partly in waters with a 5 knot speed limit, setting a custom speed value for those waters will give you a more correct ETA calculation than your present speed.

New feature: Radar Arpa and radar cursor with Furuno EC-3000 2xx9

With version 4.7.x.25 we have added support for the Furuno EC-3000 2xx9 radar. Both Radar ARPA and radar cursor is supported.

This improvement is aimed at installers and service technicians.

New feature: Transmit of warnings and cautions with ALR/ACK

In addition to the improvements we have made on the alert handling in TECDIS, we have added support for transmitting warnings and cautions with the ALR/ACK sentences. Standard setting in TECDIS is alarm transmit only, but the addition of warnings and cautions can be configured by a technician.

This improvement is aimed at installers and service technicians.

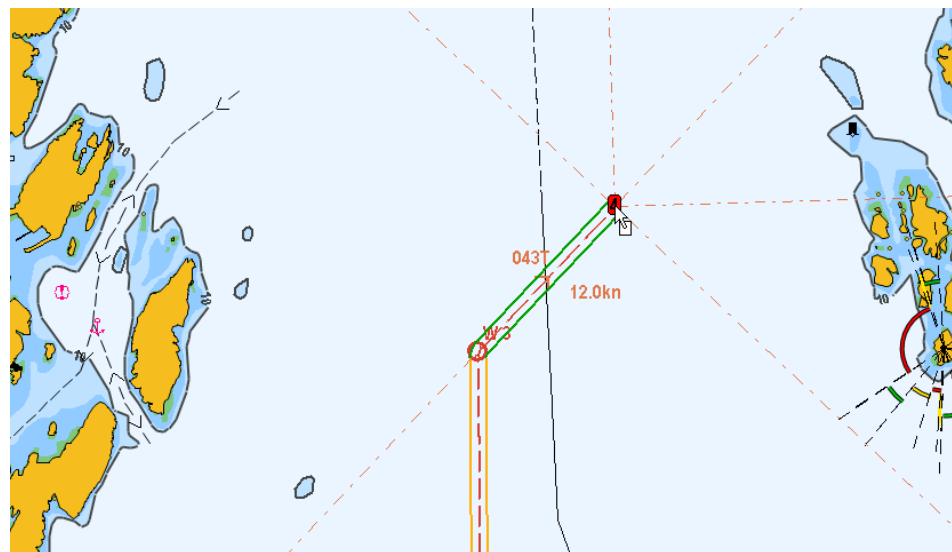
Improved: Steering information and ETA calculation

With this release we have improved on the steering information system in TECDIS. Now, steering information to the next WOL is supplied as soon as a WOL is passed.

A bonus of that change is that the system now calculates ETA through the actual turn, and not just between waypoints. Therefore, this change gives you better ETA calculations.

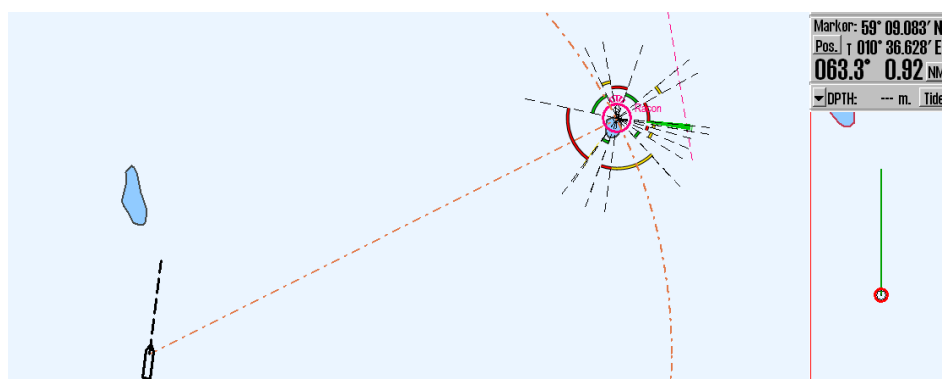
Improved: Stern-facing sightline added

We have added a new sightline for the route tool. This sightline faces to the stern, and aids you when you are planning your route with visual navigation in mind.



Improved: EBL/VRM snap to light

With active lights enabled in TECDIS, you can now anchor/target your EBL/VRM bearing to lights with snap functionality. This makes it much easier to target the bearing to the lights, as it automatically centers the bearing on the GPS coordinates of the light.



Note that **light cursor info**, **active lights** or **active lead sectors** must be active for this feature.

Behavior change: Event mark is available at 0,2 knots

As requested by some of our users, we are now making the event mark available at speeds down to 0,2 knots. The original limit was 1 knot.

Improved: Seismic streamer data

In this release we have improved the seismic streamer data reception for TECDIS with track control.

Improved: Radar cursor

Another feature that we have improved in TECDIS is the radar cursor installation, adding support for *head-up only* radars.

This improvement is aimed at installers and service technicians.