



Creators of TECDIS

Feature Guide:

TECDIS 4.7.x.27

With the release of TECDIS 4.7.x.27 we are providing you with several important stability improvements and bug fixes. For a complete list, see the release history on www.telko.no. Here you will also find Feature Guides for previous releases.

Here is a guide to the main improvements to TECDIS in this release:

Improved: Target alarms causes system errors

This release fixes a target alarm bug. This bug could cause system instability when target alarms such as Lost AIS Target were acknowledged.

Improved: Auto-detect new charts

This is a fix for repeating chart update notification in some cases when using Navtor Navbox. With version 27 this has been rectified, and we have added the option to disable the auto detect.

Disabling auto-detect of new chart updates is done by placing a mark in the "Disable 1-click chart update monitoring" in the chart loading window in TECDIS.

Improved: AIO overlay

In this release we have issued several fixes to the AIO overlay, which improves stability and error-handling.

Bug fixes:

Track Control with Anschütz NP2025	This is a fix for enabling track control with the NP2025 autopilot.
Chart redraw on startup	This fix reduces chart redraws during system startup.
Network error 10057	This fix removes any false incidents for this error message.
Time sync issue with Optical Bearing Device	This fix improves handling of time synchronization issues in <i>Optical Bearing Device</i> integration.
Route check on startup	Route check is now refreshed on system restart

Here are some features from the last releases you do not want to miss:

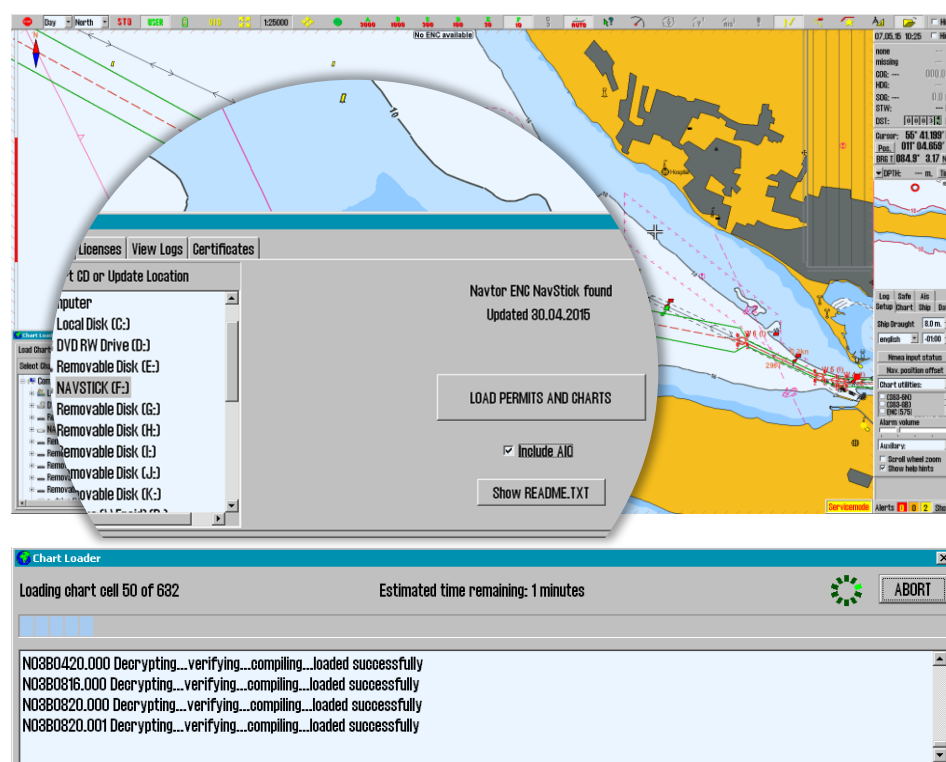
1. Chart loading in the TECDIS program itself

The main feature of release 26 was chart loading in the **TECDIS program itself**. So now you can update your chart database *without* exiting TECDIS, and as long as you have more than one database, you will have a chart view while the database is updating.

When you have Navtor AVCS with AIO, you can choose to have the AIO data installed in the same session. Chart loading in TECDIS is supported for all chart formats and services; **Jeppesen C-Map, S63** and **S57**. The interface is based on the *S63 Chart Loader*, and has been tweaked for optimum performance.

Chart loading in TECDIS is accessed from:

Setup Menu -> Chart Routines -> Load Charts

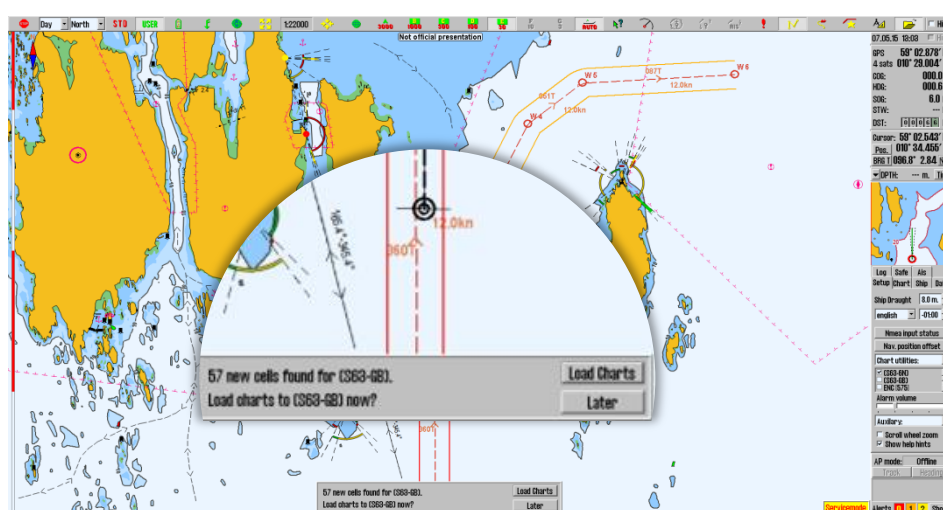


2. Auto-detect new charts

In addition to chart loading in TECDIS, we added **1-click chart install/update** in TECDIS as well. *This also auto-detects new charts, so if you have a NavBox, you get seamless chart updating!*

When charts have been loaded manually the first time, you can later just insert new chart media (Navstick, C-Map DVD, S63 base media), and the system will auto-detect if there are updates or new chart cells. When you have Navtor AVCS with AIO, the AIO data will also be updated when you update the charts.

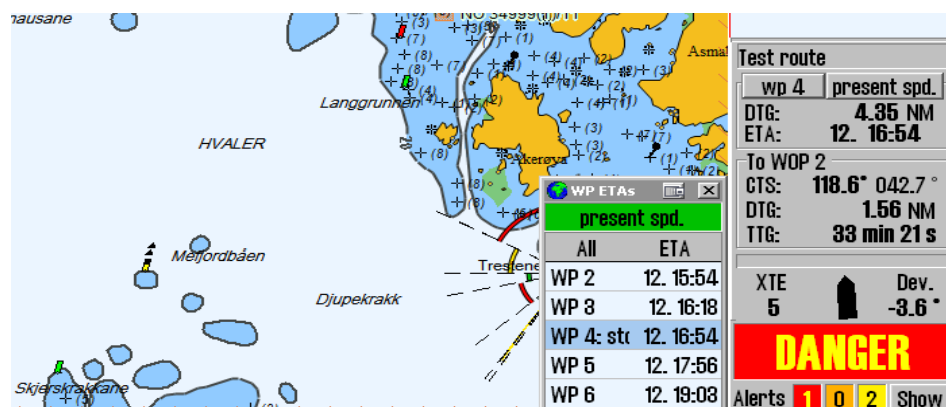
On network drives such as a NavBox the system checks for new updates every hour.



Note: Chart licenses have to be entered manually. The exception is if you are using *Navtor Navstick* or *Nautisk exchange sets* with bundled cell permits.

3. ETA list

With version 4.7.x.25 and 26 we made big changes to the ETA tools in TECDIS, and they are now more integrated and powerful than ever before.



The biggest change is the addition of an **ETA list**, showing the current ETA times for all your waypoints. The list view can be customized to show you:

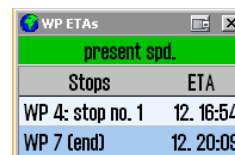
- All waypoints, with ETA
- Waypoints with text descriptions, and their ETA
- Waypoints with delays (i.e. all stops you have planned), and their ETA

by clicking on the title (All, text, stop)

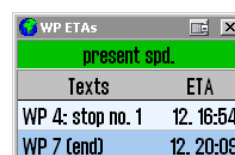
The displayed ETA can also be switched between:

- ETA in the same time zone as the TECDIS
- ETA in the UTC time zone
- ETA in the time zone of the route

by left-clicking on the ETA title

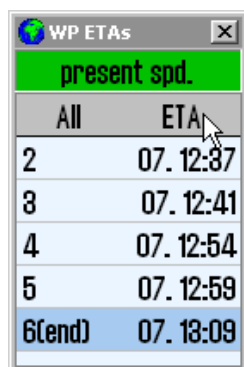


present spd.	
Stops	ETA
WP 4: stop no. 1	12. 16:54
WP 7 (end)	12. 20:09

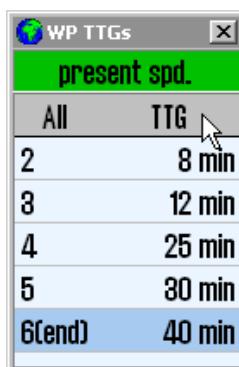


present spd.	
Texts	ETA
WP 4: stop no. 1	12. 16:54
WP 7 (end)	12. 20:09

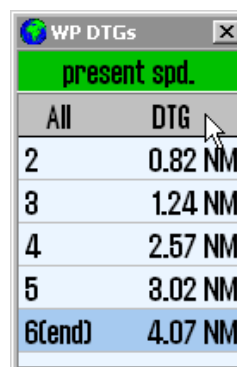
In addition to showing the ETA, you can toggle to view Time-To-Go (TTG) and Distance-To-Go (DTG) as well. You toggle by right-clicking with the cursor placed over the ETA title.



present spd.	
All	ETA
2	07. 12:37
3	07. 12:41
4	07. 12:54
5	07. 12:59
6(end)	07. 13:09



present spd.	
All	TTG
2	8 min
3	12 min
4	25 min
5	30 min
6(end)	40 min



present spd.	
All	DTG
2	0.82 NM
3	1.24 NM
4	2.57 NM
5	3.02 NM
6(end)	4.07 NM

The different ETA, TTG and DTG windows.

By clicking on the waypoints in the ETA list, you also select them as your ETA point. And if you right click on two of waypoints in the list, you will activate the ETA calculator.

In addition, these customizations are transferred to the other ETA tools, such as the ETA calculator and the ETA display in the route monitoring. You can also switch from present speed to planned speed, and the change will appear in all places.

Based on user feedback we have also highlighted the present speed setting with a green background.

