

Feature Guide:

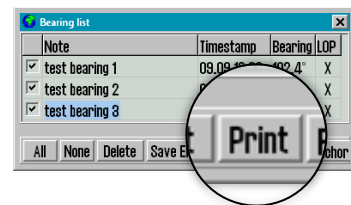
TECDIS 4.7.x.28

With the release of TECDIS 4.7.x.28 we are providing you with several important stability improvements and bug fixes. For a complete list, see the release history on www.telko.no. Here you will also find Feature Guides for previous releases.

Here is a guide to the main improvements to TECDIS in this release:

Improved: Print button added to the bearing list

This improvement comes to aid those who use the bearing list for voyage reports. With the new print button in the bearing list, you can now easily print the bearing list to a text file, instead of exporting to a csv file which requires further formatting.



Improved: Navtex integration

The most important improvements in this release are to the stability and function improvements in the Navtex integration.

Improved: Alert priorities

In this release we have improved the alert system with new priorities for some alerts, and the result is fewer alarms as some alerts have been lowered to warnings. This change will only be preinstalled on new TECDIS units delivered with version 28. Existing users need to contact a technician for this feature.

Bug fix: Startup error with low resolution monitors

This fixes a bug from version 27 that could cause startup errors if the monitor resolution was below the minimum recommendation for TECDIS

On the next pages are some features from the last releases you do not want to miss:

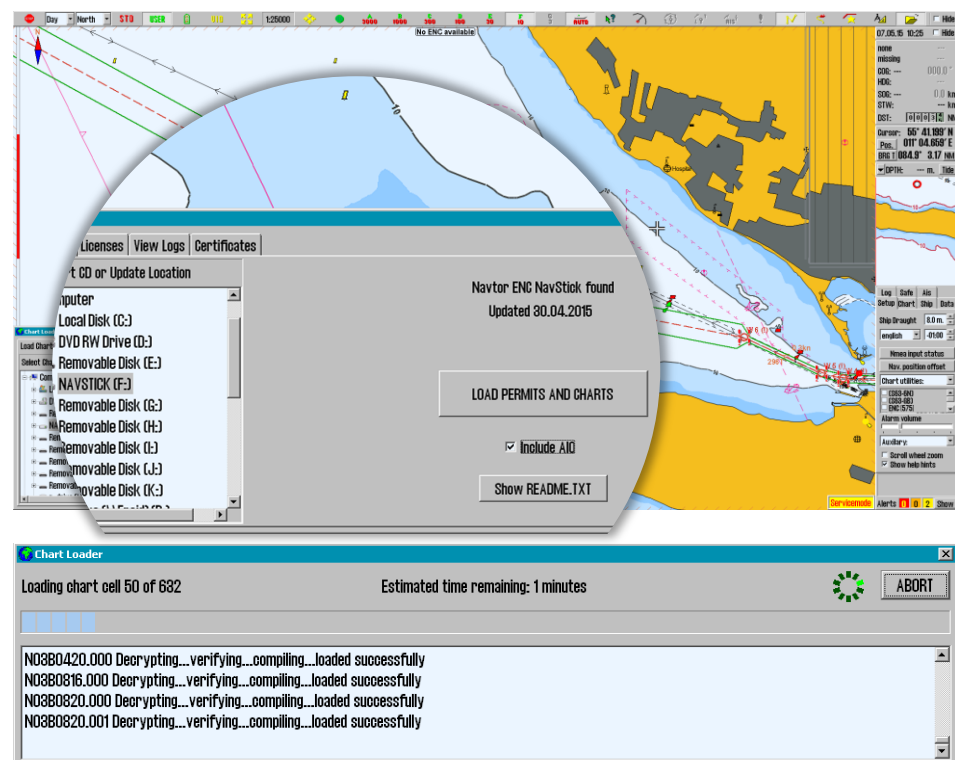
1. Chart loading in the TECDIS program itself

The main feature of release 26 was chart loading in the TECDIS program itself. So now you can update your chart database *without* exiting TECDIS, and as long as you have more than one database, you will have a chart view while the database is updating.

When you have Navtor AVCS with AIO, you can choose to have the AIO data installed in the same session. Chart loading in TECDIS is supported for all chart formats and services; **Jeppesen C-Map, S63** and **S57**. The interface is based on the *S63 Chart Loader*, and has been tweaked for optimum performance.

Chart loading in TECDIS is accessed from:

Setup Menu -> Chart Routines -> Load Charts

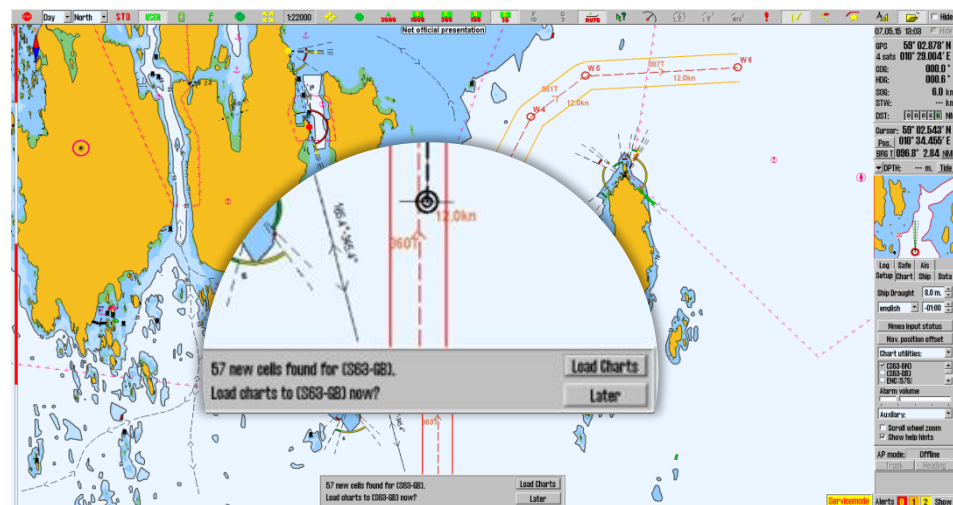


2. Auto-detect new charts

In addition to chart loading in TECDIS, we added **1-click chart install/update** in TECDIS as well. *This also auto-detects new charts, so if you have a NavBox, you get seamless chart updating!*

When charts have been loaded manually the first time, you can later just insert new chart media (Navstick, C-Map DVD, S63 base media), and the system will auto-detect if there are updates or new chart cells. When you have Navtor AVCS with AIO, the AIO data will also be updated when you update the charts.

On network drives such as a NavBox the system checks for new updates every hour.



Note: Chart licenses have to be entered manually. The exception is if you are using *Navtor Navstick* or *Nautisk exchange sets* with bundled cell permits.

3. Undo button



This has been much requested by users, and we can now present a new Undo function. By pressing the **UNDO** button on the route toolbar, you can undo:

- The latest route **deletion** you performed
- The latest route **edit** operation you performed
- The latest route **drawing** operation you performed
- The latest **parallel index line edit** operation you performed

4. Oil rig symbol

As a result of much requests, we have added an **Oil rig symbol** to the TECDIS symbol range. It is found on the expanded symbol list available in the *symbol tool menu* (press one of the lower symbols [ship, anchor] to access).

