

Feature Guide:

TECDIS 4.8.3.2

With the release of TECDIS 4.8.3.2 we are bringing you new features and improvements. For a complete list of changes, see the release history on www.telko.no. Here you will also find Feature Guides for previous releases.

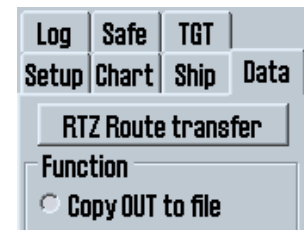
New feature: RTZ route transfer

This feature requires configuration by a service technician.

This feature uses the IEC 61162-450 network (if configured) to transmit routes in the RTZ format. So now you can send routes from your TECDIS directly to the backup ECDIS.

RTZ route transfer is mandatory for vessels where the primary and backup ECDIS brands differ, while use of this feature is optional for dual TECDIS installations.

With RTZ route transfer activated, you can access the functionality from the Data menu, by pressing the RTZ Route transfer button.



This opens the RTZ window, where you can see:

Received RTZ routes

RTZ Route Transfers				
Received from other ECDIS	Sent to other ECDIS	Status and error counts	Log	
Route name	Version	Active	Transfer status	Import
AROUNDtheSKAGEN	17.09.22 16:01:27	No	Received and accepted	<input type="checkbox"/> Activate
IEC 61174 ed4 sample 1	17.09.22 16:01:07	No	Received and accepted	
130130 e-Navigator test route Fal-Capetown	17.09.22 16:00:47	Yes (WP 1)	Received and accepted	
130130 TECDIS RTZ Sample Route	17.09.22 16:58:06	No	Received and accepted	

These routes are received on the TECDIS unit, but not automatically imported. You can import just the routes you want, and you can also activate them.

Sent RTZ routes

RTZ Route Transfers				
Received from other ECDIS	Sent to other ECDIS	Status and error counts	Log	
Route name	Version	Active	Transfer status	Resend
AROUNDtheSKAGEN	17.09.22 16:01:27	No	Received and accepted	
IEC 61174 ed4 sample 1	17.09.22 16:01:07	No	Received and accepted	
130130 e-Navigator test route Fal-Capetown	17.09.22 16:00:47	Yes (WP 1)	Received and accepted	
130130 TECDIS RTZ Sample Route	17.09.22 16:58:06	No	Received and accepted	

This tab shows you what routes that have automatically been sent to the backup ECDIS. You can also see if the transferred routes have been imported in to the backup ECDIS.

Improvement: RTZ route export and import format

In TECDIS you now have the option to export and import routes in the new standardized format RTZ (and RTZP).

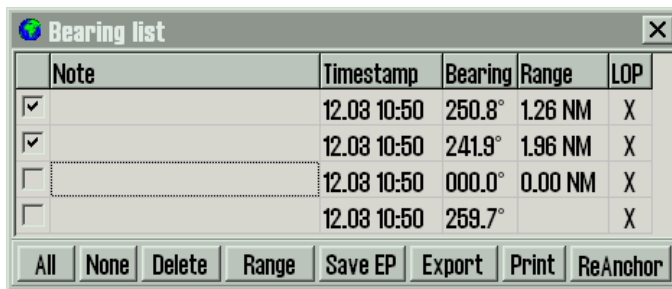
The routes can be imported and exported from the route organizer, just like the native TECDIS and TELchart ECS format; *.lst.

You can also export routes from the route report tool.

With the RTZ route format, you can transfer routes from any RTZ-compatible navigation tool to the TECDIS. Note that some manufacturer-specific features may not be transferred.

Improvement: Plotting of observed bearings and distances

This improvement is a result of customer feedback; to help users log observed bearings and distances during a voyage.



Note	Timestamp	Bearing	Range	LOP
<input checked="" type="checkbox"/>	12.03 10:50	250.8°	1.26 NM	X
<input checked="" type="checkbox"/>	12.03 10:50	241.9°	1.96 NM	X
<input type="checkbox"/>	12.03 10:50	000.0°	0.00 NM	X
<input type="checkbox"/>	12.03 10:50	259.7°		X

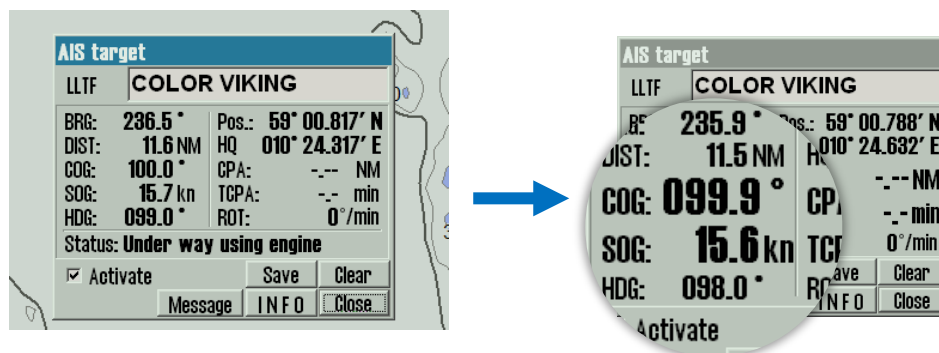
All None Delete Range Save EP Export Print ReAnchor

The bearing list has been improved with;

- A new column for **Range**.
- A **Range button**; when pressed, you can add range to selected observations, or remove range from an observation (depending on what you have selected in the bearing list). The Range button is not available for bearings that are converted to LOP directly from range-only observations.
- Estimated Position (EP) symbols are given a **range estimation** based on the time of the most recent observation, not when you press the *Save EP* button.
- When an EP symbol is added through the bearing list, the action is now logged in the **DR fix logs**, together with the bearings and ranges used.
- *The previous way to insert range for bearings, by writing “range” in the text field, is replaced by the Range button.*

Improvement: Larger display of COG, SOG, CPA and TCPA for targets

This improvement was highly requested by some of our users. You can now click on the COG, SOG, CPA and TCPA values in the target window, and they will become bigger and much more viewable. To revert to smaller text. Simply click on the values one more time.



Improvement: Reduction of false Crossing Safety Contour Alerts under anchor watch

In this release we have continued to reduce the false *Crossing Safety Contour* alerts (Antigrounding alerts). While anchor watch is switched on and the vessel is within the anchor watch circle, the filtering of false positives for the **Crossing Safety contour** alert has been increased (limited to 6 seconds for speeds above 0.5 knots, and movement above 0.03 NM for speeds below 0.5 knots).

Smaller bug fixes and improvements:

- Increased the width of the VRM 1&2 lines for Furuno RCU-018
- Removed a minor memory leak

Document revision history

09.03.2018	0.1	Initial draft	Cato Haugland
09.03.2018	0.2	Internal review changes	Pål K. Hansen
12.03.2018	1.0	Release version	Cato Haugland