

## Feature Guide: TELchart ECS 3.7.x.19

With the release of TELchart ECS 3.7.x.19 we are providing you with several new features and bug fixes. For a complete list, see the release history on [www.telko.no](http://www.telko.no). Here you will also find Feature Guides for previous releases.

Here is a guide to the main new features to TELchart ECS:

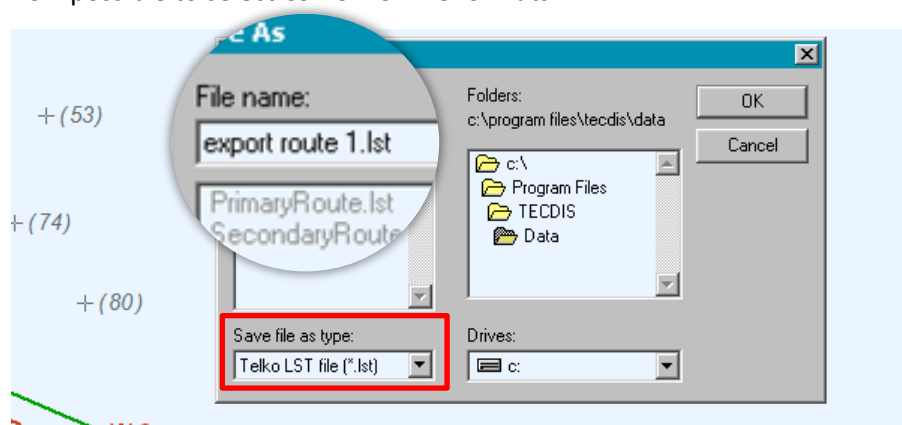
### New feature: Navtor NavSync directly on TELchart ECS

In this release we add support for direct installation and use of Navtor NavSync software on TELchart ECS units. Contact NAVTOR for further details and installation.



### New feature: Multiple formats for saving routes

In the route list window, found using the printer icon, you can now select file format for saving your routes. In addition to the existing TXT file format, it is now possible to select CSV or LST file formats.



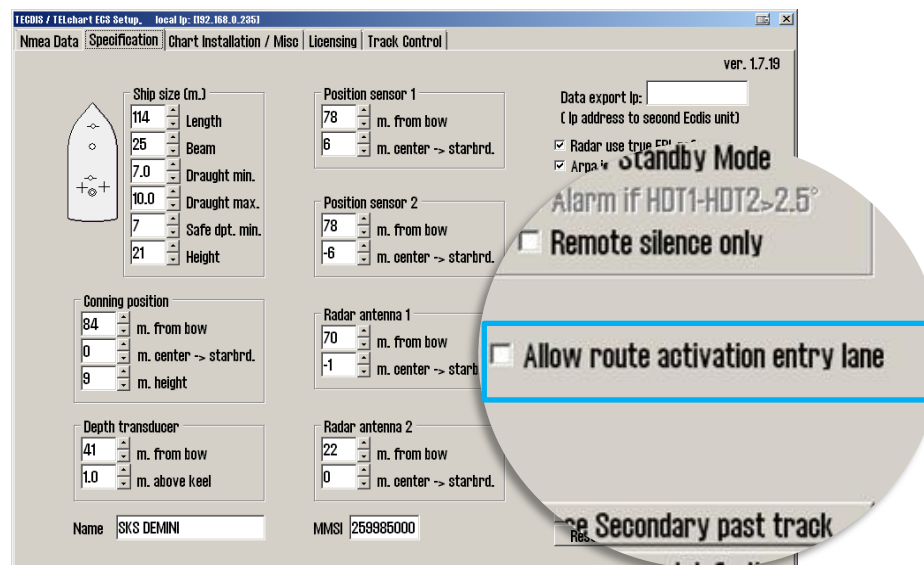
To alter the file format, simply edit the file extension. It is set to **.lst** as standard, but can be changed to **.txt** and **.csv**.

NOTE: The dropdown box outlined in red does not change file extension. It is a filter, and shows the different files you have in the selected folder with the same file extension. This is useful when you want consistent file names.

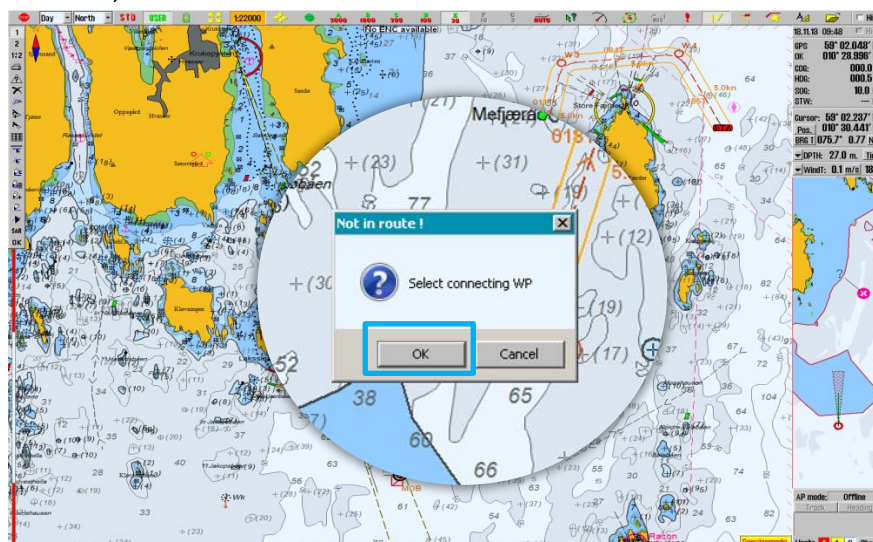
## Much requested: “Old-style” route activation available

With TELchart ECS 3.7.x.16 we changed the route activation behavior. After many requests, we have decided to add the “old-style” route activation again as an option in this release.

It can be set in **TELchart Setup**, by selecting **Allow route activation entry lane**.



With this feature activated, you will be asked for a connecting waypoint when you are finished creating a route. If you do not want to connect a waypoint at this time, select **cancel**.



**NOTE:** Selecting a connecting waypoint will change the waypoint numbering for your route, setting your current destination as the first waypoint.

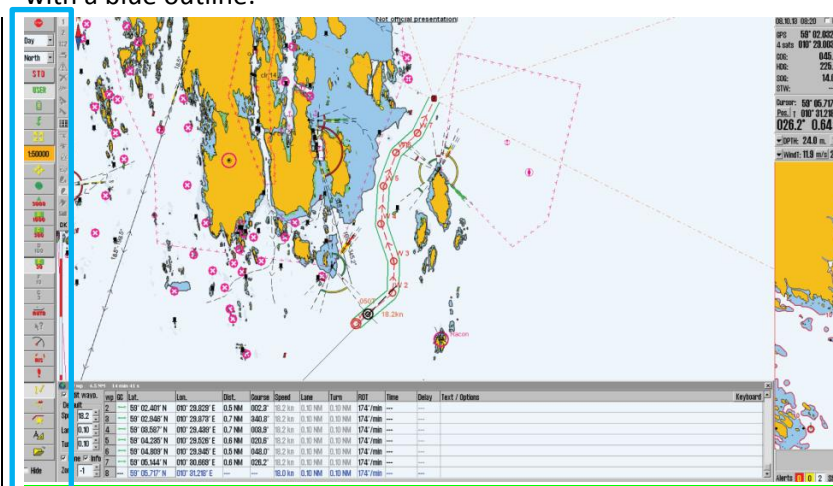
## New feature: Chart database synchronization<sup>1</sup>

With an optional *TELKO Synchronization kit* it is now possible to synchronize the chart databases between connected TELchart ECS units. This means that every update or correction you make, and any charts you load on one TELchart ECS, now automatically syncs to the other TELchart ECS.

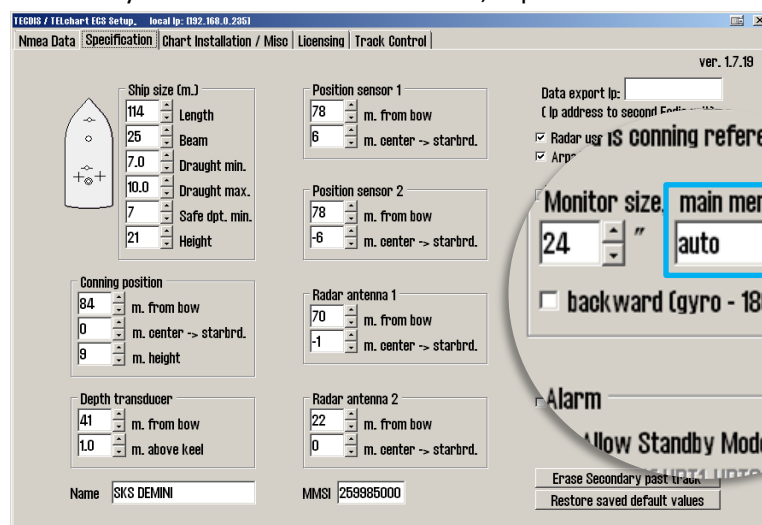
NOTE: TELKO Synchronizer has a separate User Guide and Installation Manual.

## New feature: Main menu on the left side

If you have a widescreen monitor, or simply want to have more vertical space available for the chart on your TELchart ECS monitor, we have good news for you. In addition to the standard screen layout, you can now choose a different layout, with the main toolbar placed on the left side. The toolbar is here shown with a blue outline:



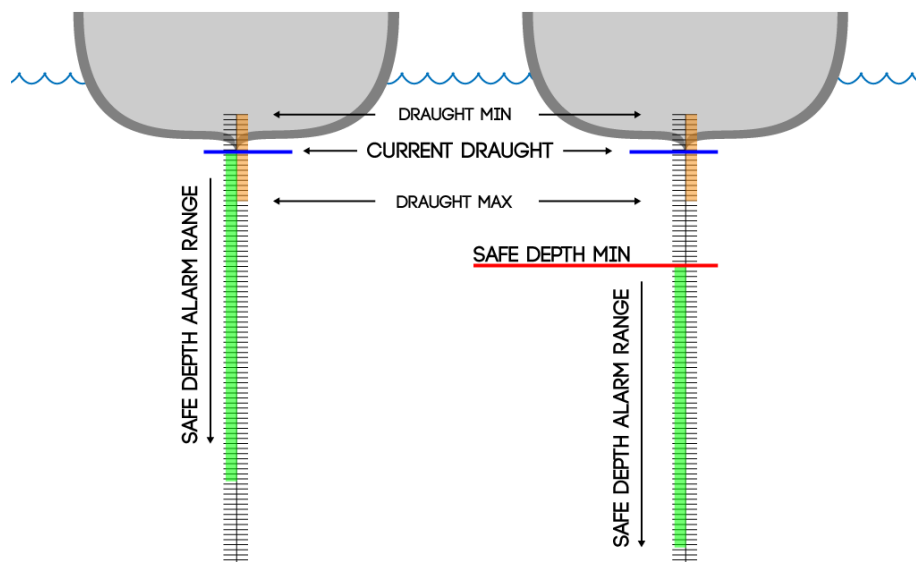
This option is available in **TELchart ECS Setup**, under the *main menu* dropdown list. Here you can choose between auto, topbar and sidebar.



<sup>1</sup> Purchase required.

## New feature: Minimum safe depth setting

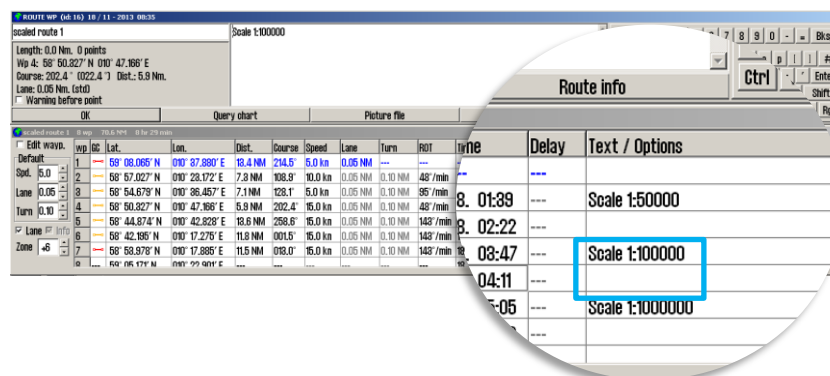
With the new **Safe depth min.**-value in **TELchart ECS Setup**, you can now set a minimum safety depth for sailing, regardless of vessel draught. This limits the safe depth alarm range in TELchart ECS safe menu. See comparison below:



## New feature: Set automatic chart scale for waypoints

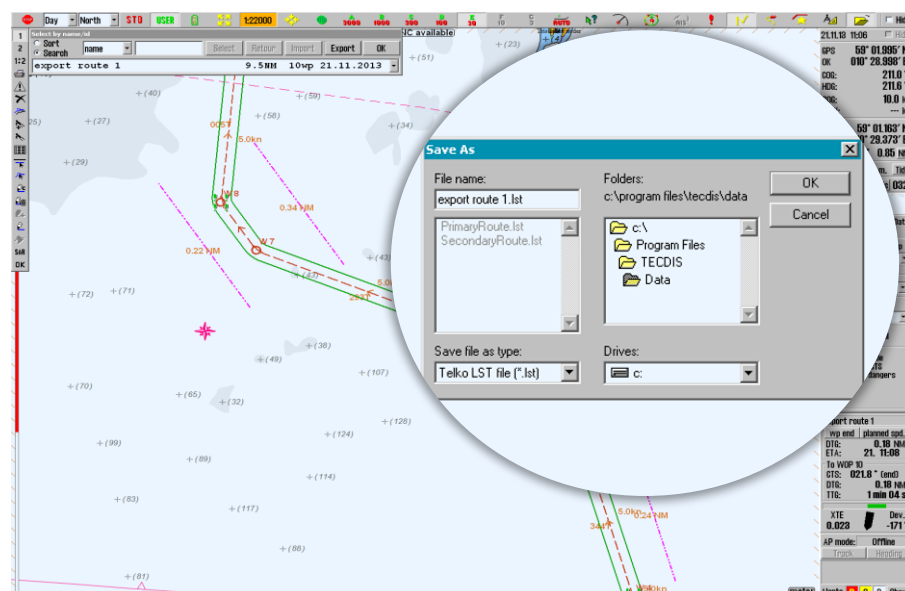
When sailing a route, it is now possible to have predefined chart scale settings, which will change the zoom level when a given waypoint is passed by the vessel.

This is set in the **voyage planner**, where you click on the field **text/options** for your selected waypoint and then enter the phrase **Scale 1:x** (where x represents the desired scale) in the **route info-window** that appears.

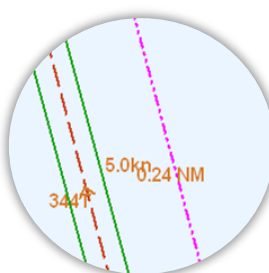


## Improved: LST export<sup>2</sup>

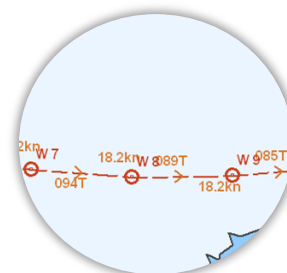
The route export format \*.lst is now updated to include critical points, temporary great circle waypoints and parallel index lines.



Critical point



Parallel index lines



Temporary great circle waypoints

## Improved: 0.1 meter increments for draught

Current vessel draught, maximum and minimum draught can now be set in 0.1 meter increments, allowing you to fine-tune your ship parameters.

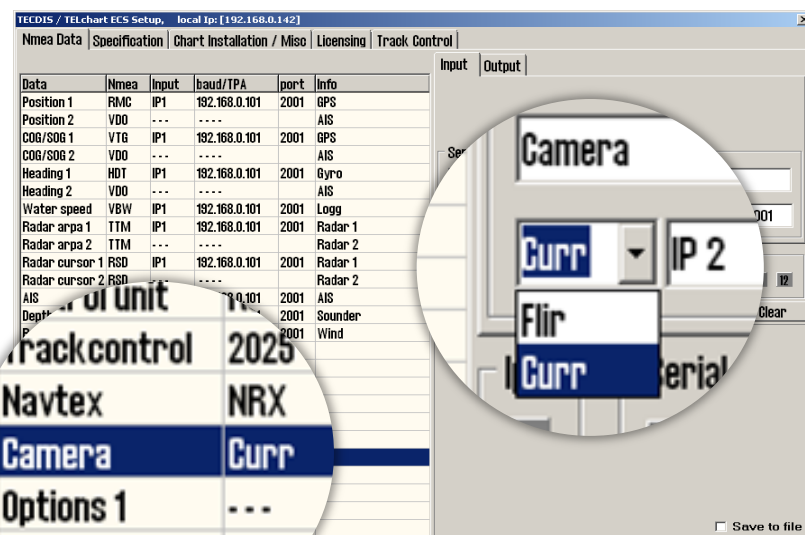
1. Maximum and minimum draught is set in **TELchart ECS Setup**
2. Current draught is set by the navigator in **TELchart ECS settings**, in the **Setup menu**

<sup>2</sup> TELchart ECS Small (software only) requires purchase of option **Data transfer**. Contact your Furuno dealer for more information.

## Improved: FLIR is now CAM

With the added support for cameras from *Current Corporation*, we have changed the symbols and descriptions for camera operation. In the chart view and in TELchart ECS Setup, you will see **CAM**, and in the menu you will see **Camera control**.

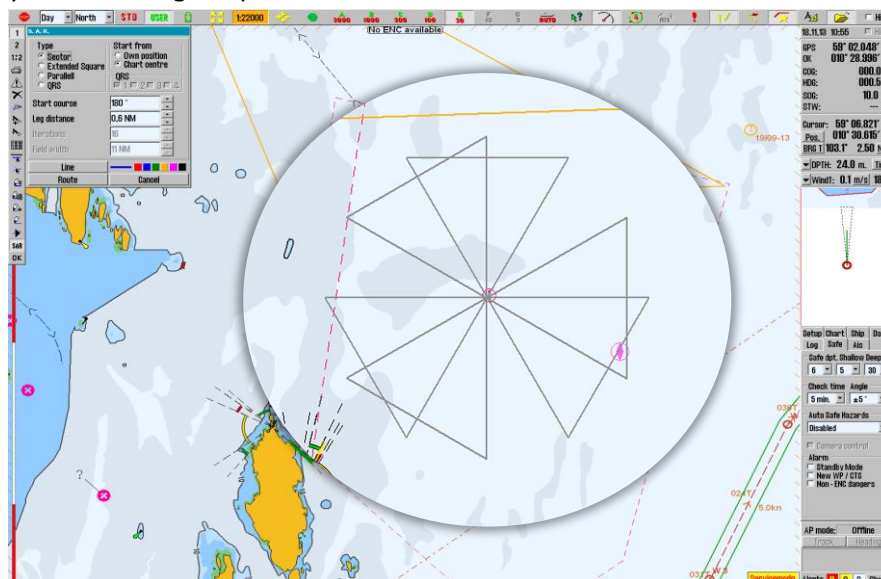
We have also added network control for *Current* night vision cameras. Now you have drag and drop control using the CAM symbol in the chart. You can lock the camera on both AIS-targets and chart objects/terrain.





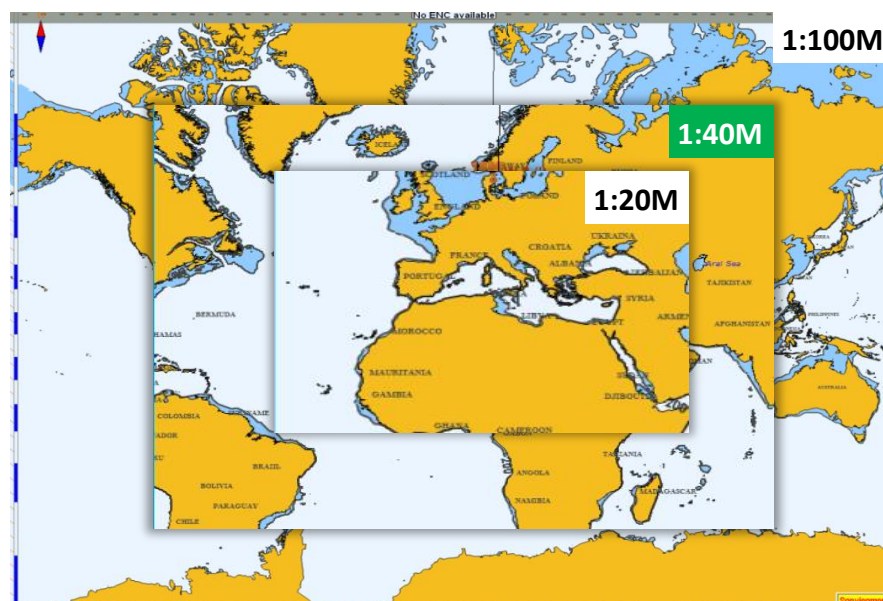
## Improved: S.A.R. pattern preview

The Search and Rescue (SAR) function in TELchart ECS has been greatly improved in this release, giving you live preview of the different patterns while you are setting the parameters.



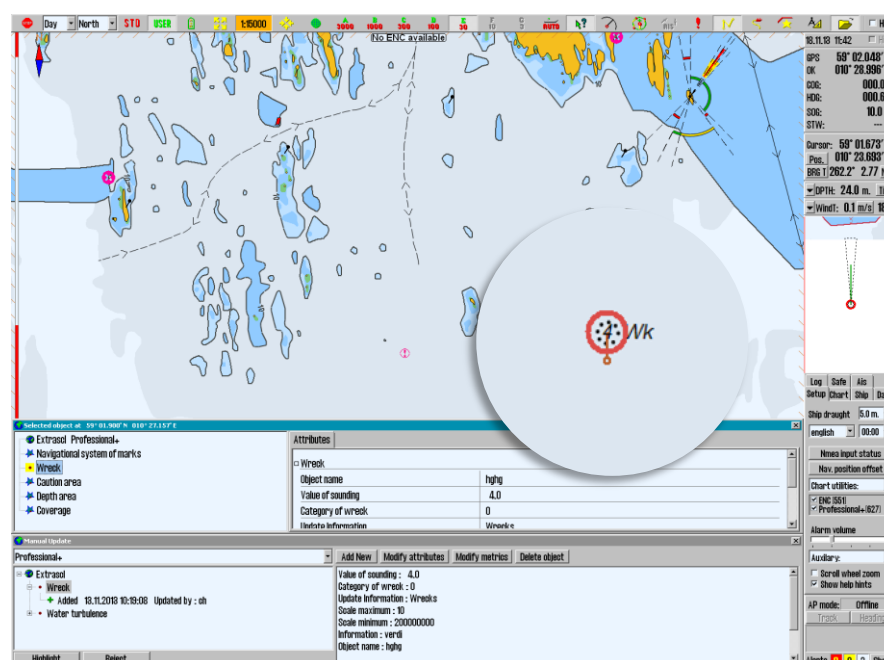
## Improved: Zoom-level 1:40M added

To further improve the overview zoom levels in TELchart ECS, we have added 1:40 million as a new zoom level. A benefit from this is the possibility to view entire oceans (the North Atlantic Ocean for example) with a higher degree of detail.

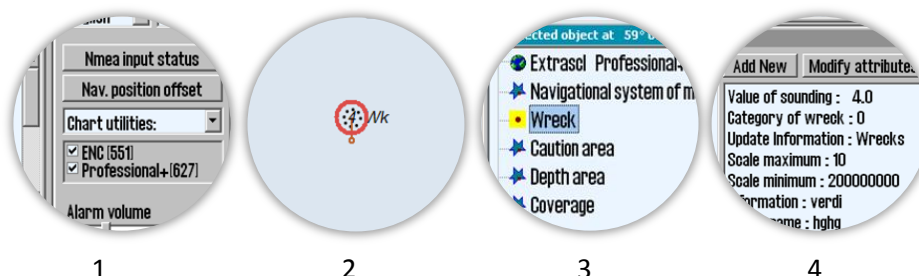


## Improved: Modify existing chart objects

If you have many inserted chart objects (wrecks, shoals, beacons and others) you now have the possibility to modify them using the Manual Update feature. You can select objects to modify using the query cursor and/or object inspector.



1. Select Manual Update in **TELchart ECS settings**, in the **Setup menu**, in the **Chart utilities** dropdown list.
2. Select the desired object, in this example a wreck, using the **query cursor** found in the **top menu bar**
3. Double click the desired object in the **object inspector window**
4. Modify the chart object in the **Manual Update window** as desired



For more information on fixes and minor improvements in this release, see [www.telko.no](http://www.telko.no)