

Feature Guide: TECDIS 4.7.x.16

With the release of TECDIS 4.7.x.16 we are providing you with several new features and bug fixes. For a complete list, see the release history on www.telko.no.

Here is a guide to the main new features to TECDIS:

Important behavior change: Route selection

This is a feature change all users will notice – we have now changed the system response to route selection. Before, you would be asked to set a connecting waypoint, thus connecting your ship with the route at the expense of changing waypoint numbering.

Now, we have changed the behavior completely. The system will no longer ask for connecting waypoint when selecting or resuming a route and your waypoint list will not be altered as a consequence.

New feature: Track control with autopilots EMRI SEM 200 and Furuno FAP-2000

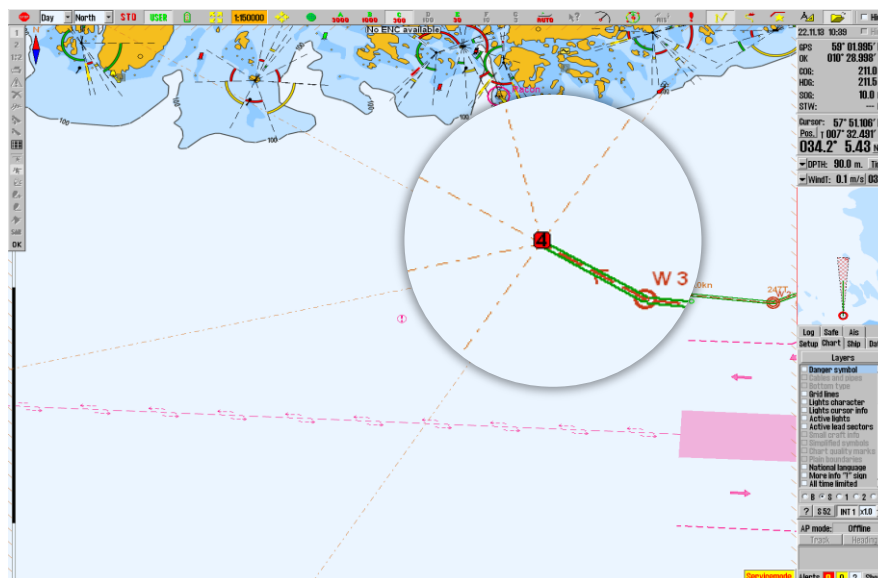
In this edition of TECDIS software we have added two new autopilots for Track control. These are now a part of our new MED-B-8022 certificate for the TECDIS TCS (Track control system), an optional add-on¹ for TECDIS.



¹ TECDIS TCS is an optional add-on feature in TECDIS, and requires purchase. Contact Furuno Norway or your Furuno Norway-dealer for more information.

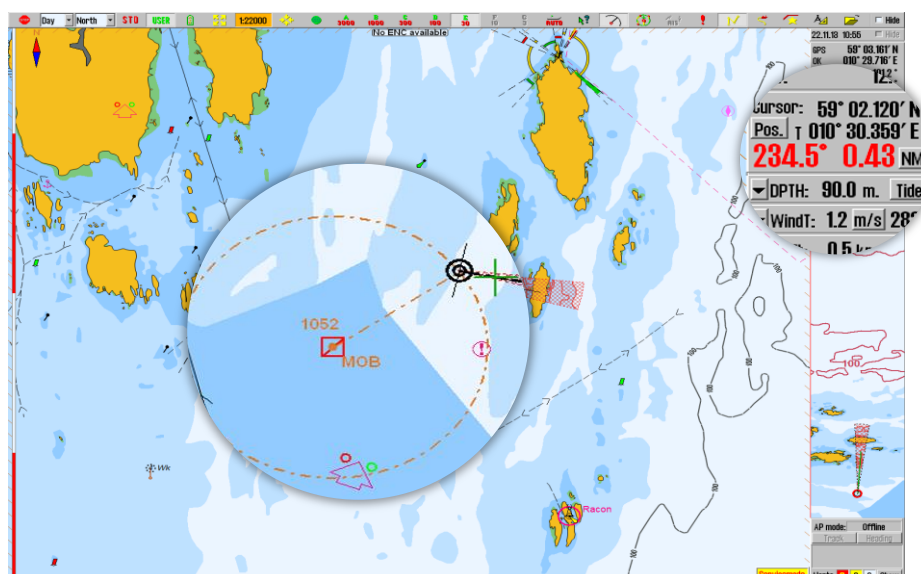
New feature: Sightlines

When placing waypoints on paper charts, you can use a ruler to view sightlines and plan for further waypoint placing. This is a good visual aid for placing waypoints, and we have now introduced a feature for this in TECDIS. From wheelover position, you now see sightlines at 0, 45 and 90 degrees, both when placing waypoints and when placing cursor over existing waypoints. With sightlines it is now much easier to do visual navigation.



Improved: Man over board / MOB

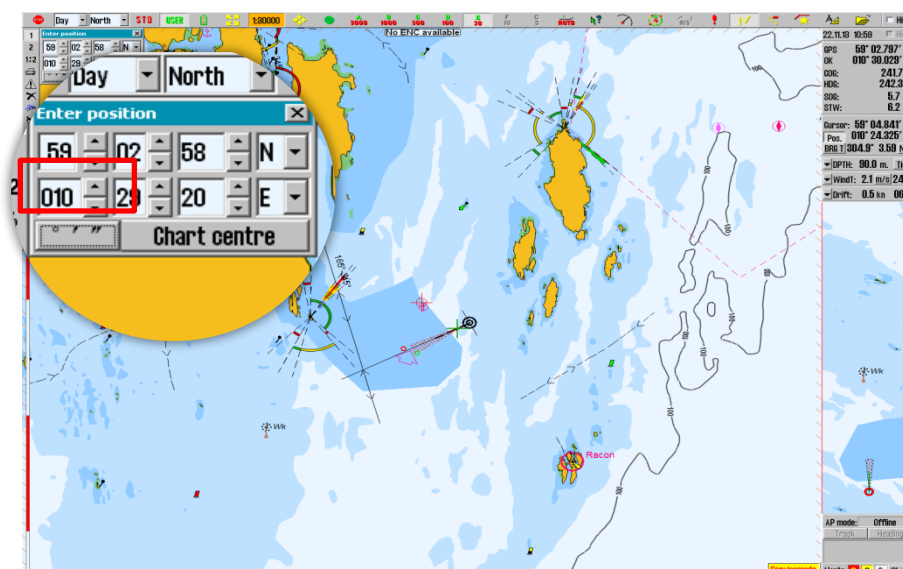
The MOB feature has been upgraded with range and bearing from the vessel. So when you add a MOB mark using either F10 or right-clicking the "!"-button, you will automatically be shown range and bearing, both in the information field and in the chart view.



Improved: Position entry

You can now also enter position in the Position tool in degrees, minutes and seconds (example: 59° 02' 13" N, 010° 32' 46" E).

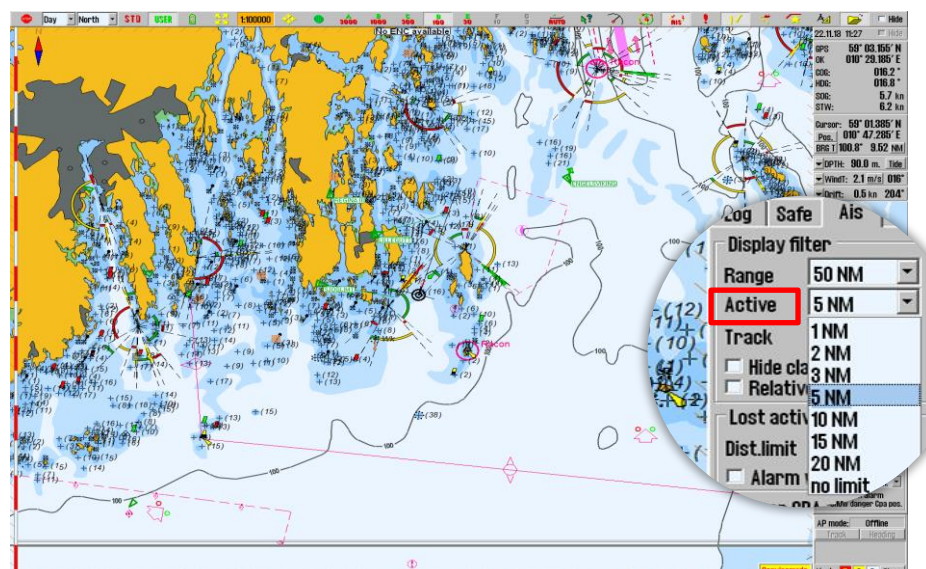
This is an alternative to entering position in degrees, minutes and thousandths. Use the button marked in the image below to change between modes.



Improved: Activating AIS targets

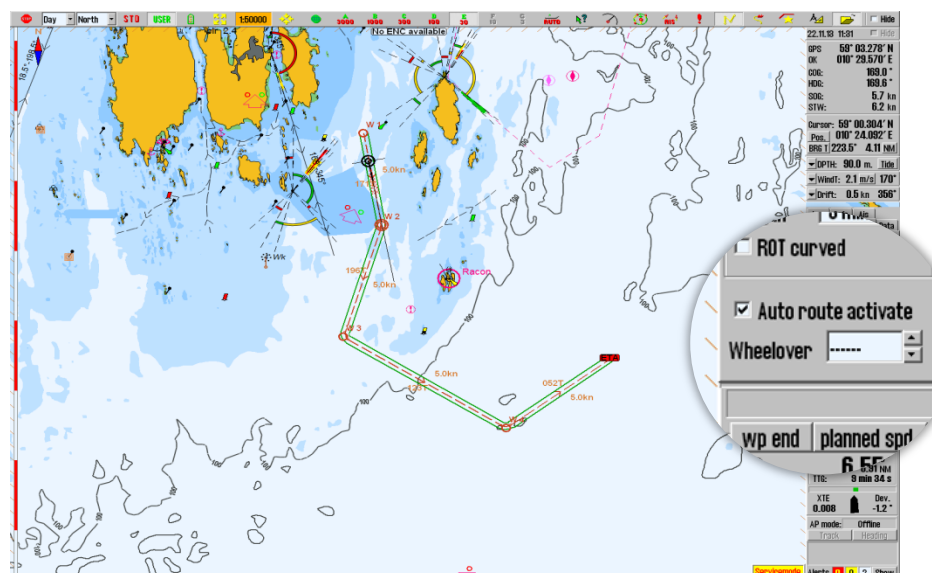
Before, you had the option to activate all AIS targets. Now, we have changed that feature completely, and instead added a distance tool to refine which AIS targets are activated, so that you now have better control.

Inactive targets within AIS range is shown only as a symbol, with active targets also showing the vessel name/MMSI number. By setting the “active” range to **No limit**, all AIS targets within range are activated.



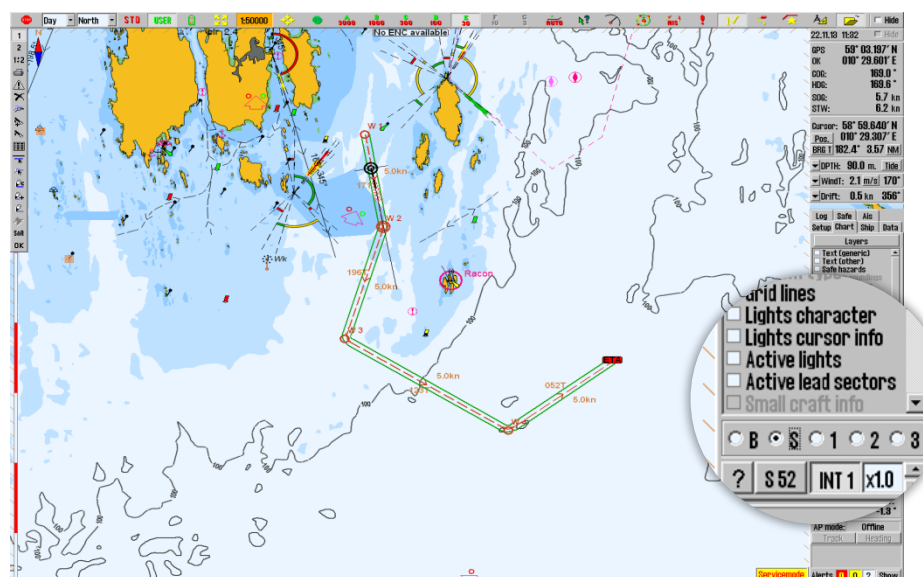
New feature: Auto route activation

In this TECDIS release we have added automatic route activation. This is available in the “ship”-menu, and when applied it automatically activates the created/edited route when you are finished making it.



Improved: New chart detail level – Standard

In the chart menu you can change the detail level of charts between Basic (B) and user-created levels 1, 2 and 3. Now we have added the optional Standard (S) level. This sets the detail level to the same as Standard chart presentation found on the STD-button, but does not impose S52 presentation if you have superior presentations available, such as Professional+ chart presentation.

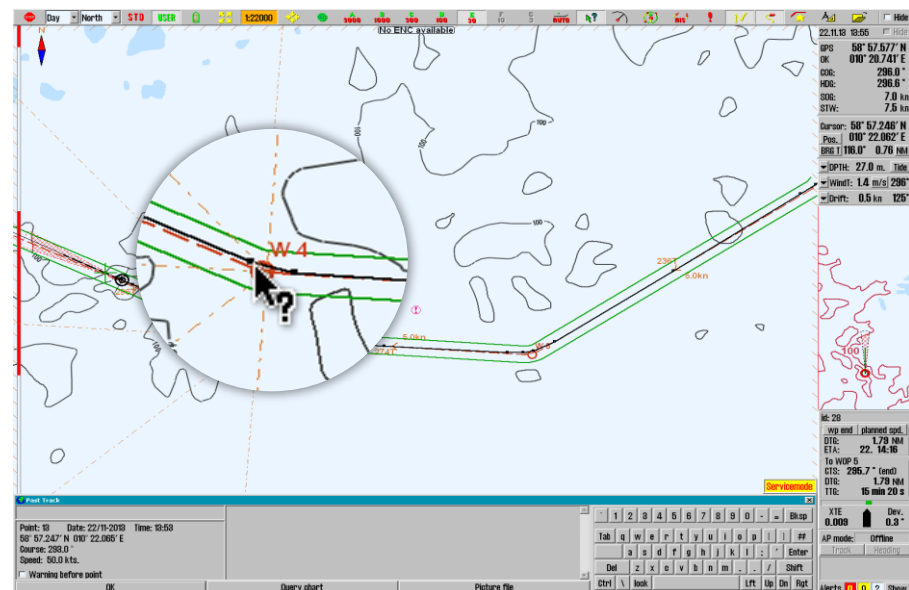


Improved: Sensor switch COG/SOG

When position sensor use is switched to between the primary and secondary sensor, COG/SOG now automatically follows.

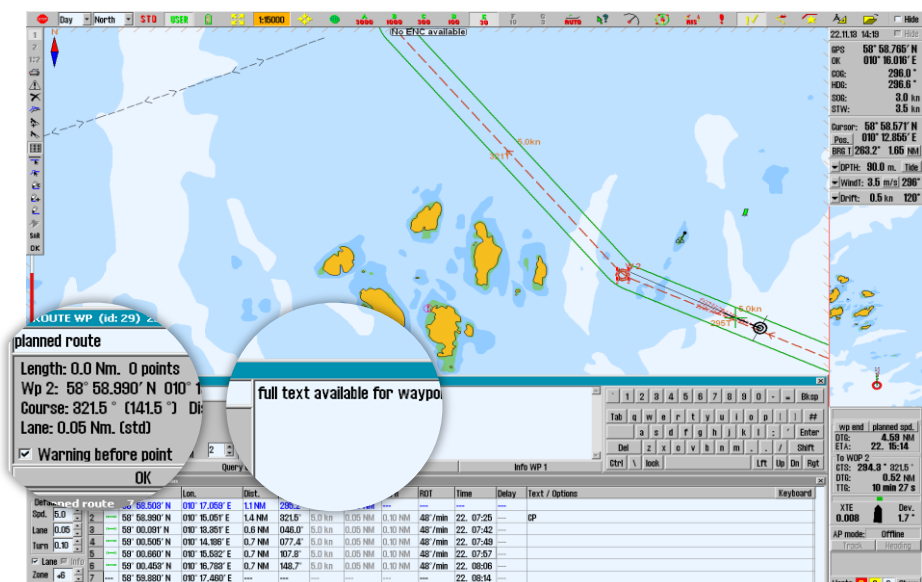
Improved: Query cursor

It is now possible to inspect mariner objects, tracks and routes in the same position by repeatedly using the query cursor in the same location. Before, only the route would be selectable, not the track.



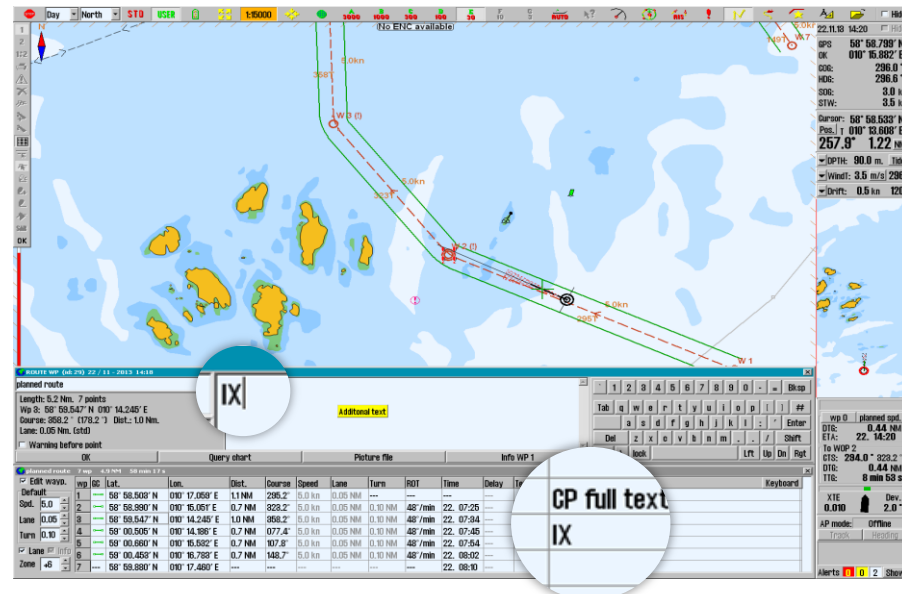
Improved: Route planner

Clicking in the **text/options** field now allows easier access to full note text, critical point and route name modifications.



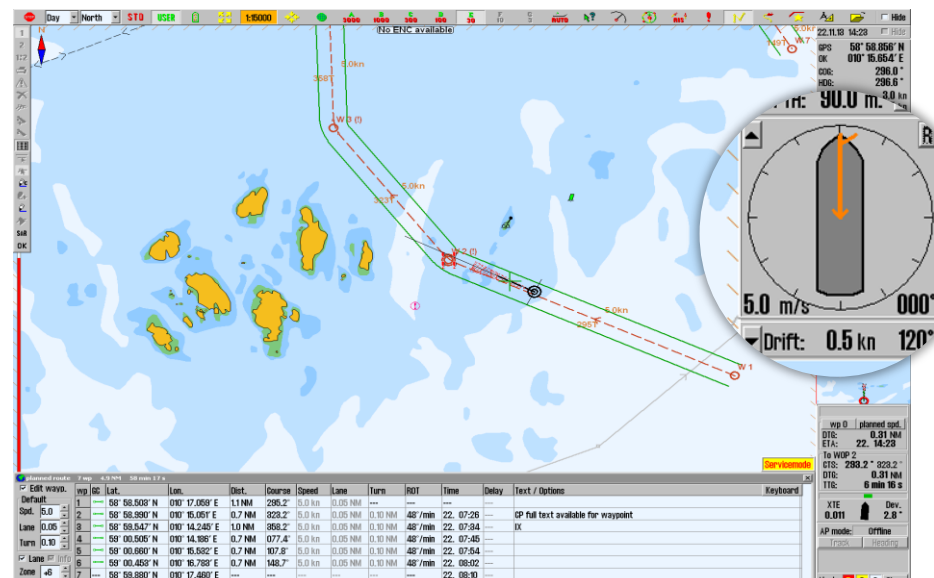
Improved: Indication of index lines

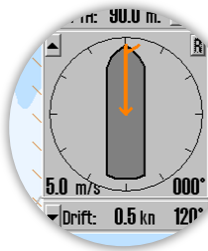
The presence of index lines on a route leg is now indicated in the route planner grid ('IX' in notes).



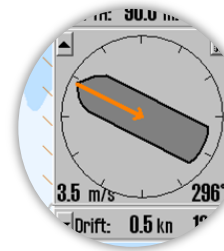
Improved: Wind direction

We have now added support for wind sensors sending True wind direction data.





True wind direction



Relative wind direction

Improved: Chart panning

Chart panning is improved by moving the cursor to chart edges while windows are open.

