

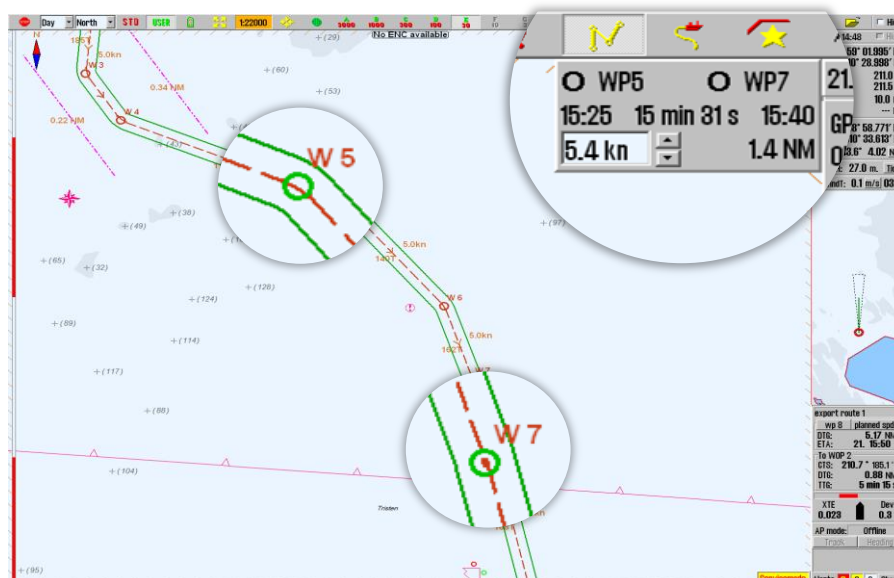
Feature Guide: TECDIS 4.7.x.17

With the release of TECDIS 4.7.x.17 we are providing you with several new features and bug fixes. For a complete list, see the release history on www.telko.no.

Here is a guide to the main new features to TECDIS:

New feature: ETA tool

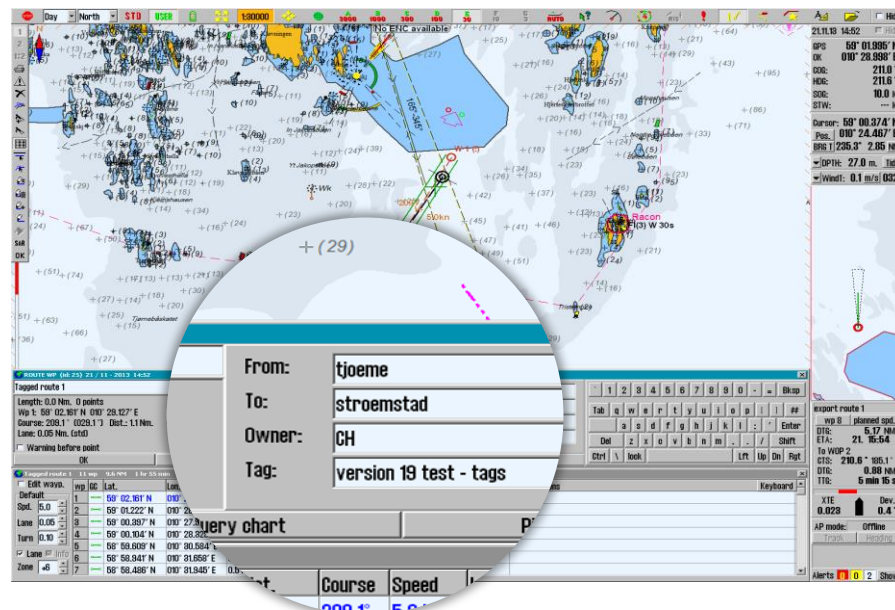
In this release we have included a tool for checking ETA, speed and distance between two route waypoints. By right-clicking on any two waypoints in the chart or on the waypoint numbers in the route planner, you activate the ETA tool. You can see the different arrival times for different speeds by changing the speed value. To remove you simply right click once more on the waypoint.



New feature: Route tags

This is one of our powerful new search and sorting features. To make it as easy as possible to sort and search through the routes on your TECDIS, we have introduced *tags*. By clicking in the text field for the first waypoint in the route planner, you now get a new window where you can insert the following tags:

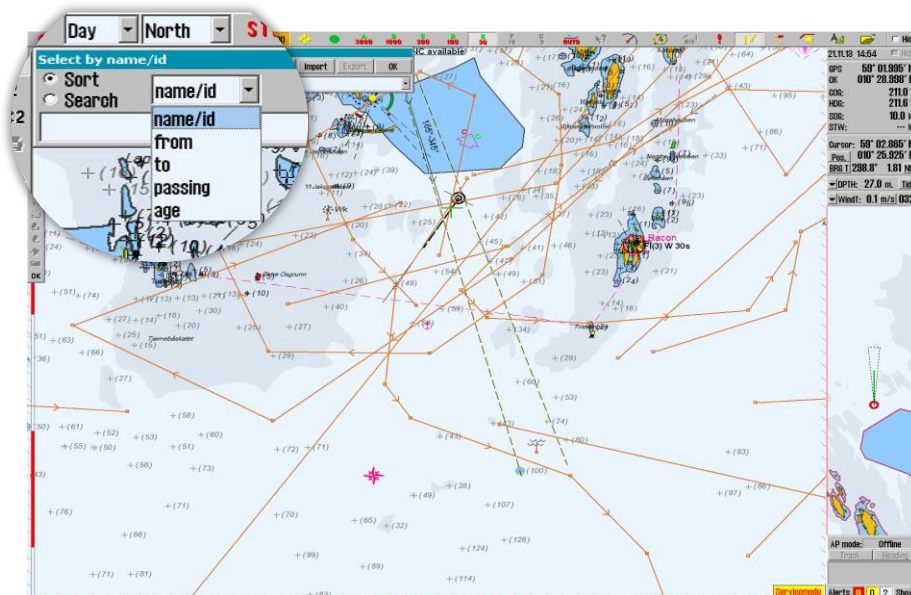
- From
- To
- Owner
- Tags



These tags are very useful when you use the route selection tool, as you can see in the features below.

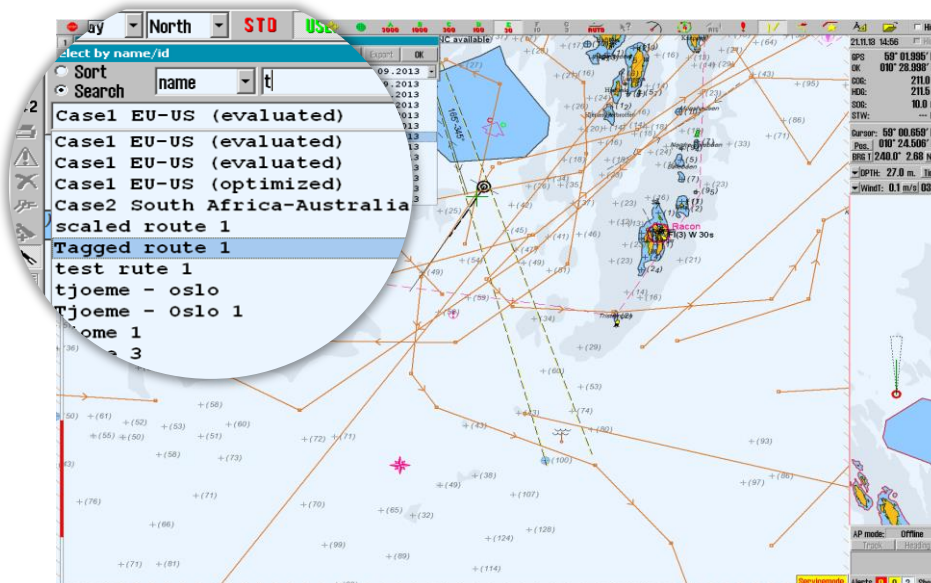
New feature: Route sorting

The route selection tool has now been completely revamped. Featuring a brand new sorting function, you can now sort your routes using a dropdown list, and sort according to route name, age, distance to map center, and more.



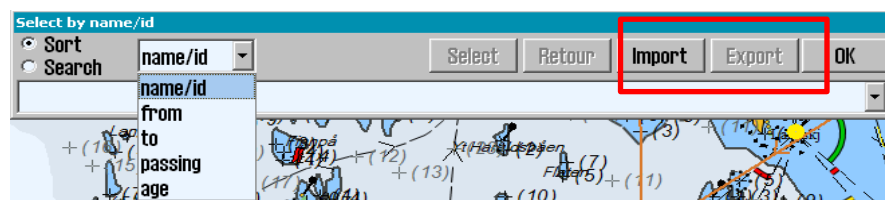
New feature: Route search

In the route selection tool, you now also have the ability to search in your route database. This function uses the tags you can set in the route planner. So now, all you have to do, is select the tag type you want to search within (to, from, owner, tags) and type away. The results are shown sorted alphabetically by route name, and the wanted route tag is also shown in the results list.



New feature: Route import and export

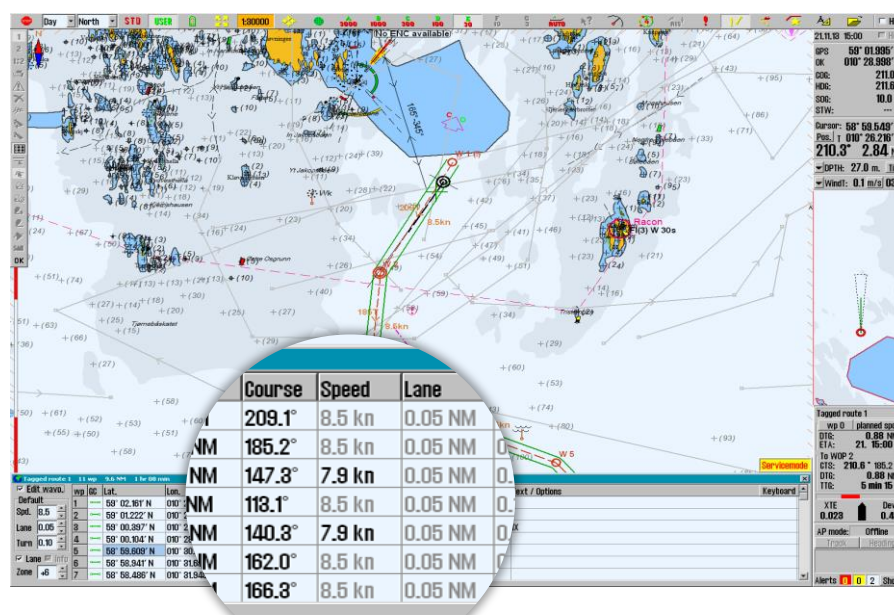
Another great improvement in TECDIS is the addition of route import and export. In the route selection tool, you can now import and export routes. For import, we use the *.lst file format. For export, you can choose between *.lst and *.csv file formats. CSV files are suitable for import in Excel, perfect for reports and off-ship review of the route.



New feature: 1-click fixed speed

Setting fixed speed, lane and turn values while planning routes is now easier than ever before.

To fix/lock the wanted values, simply change the default values in the route planner to what you want it to be and right-click it. It is now fixed, and can only be changed by right-clicking it again. This can be done separately for all waypoints.



Improvement: Echo sounder

We have now changed the offset increment steps from 1.0m steps to 0.1m steps. So now you can set the echo sounder offset form keel much more precisely.

NOTE: Mismatch between the offset entered in TECDIS Setup and the offset given in the NMEA sentence from the Echo sounder, will sound an alarm if greater than 1.0m.

Improvement: Radar echo overlay

The radar echo overlay is now improved with better overlay quality, connection times and stability when switching the echo overlay source between radars.



Creators of TECDIS

Improvement: Bearing list calculations

In the bearing list, an estimated position can now be calculated from a single bearing/range entry, such as from a radar.

Improvement: Time marks

Time marks are now shown on all displayed tracks, as long as the most recent month of tracks or less are displayed.

To see all bugfixes and improvements, see the [TECDIS release history](#) on our website, www.telko.no.