

Feature Guide: TECDIS 4.7.x.18

With the release of TECDIS 4.7.x.18 we are providing you with several new features and bug fixes. For a complete list, see the release history on www.telko.no.

Here is a guide to the main new features to TECDIS:

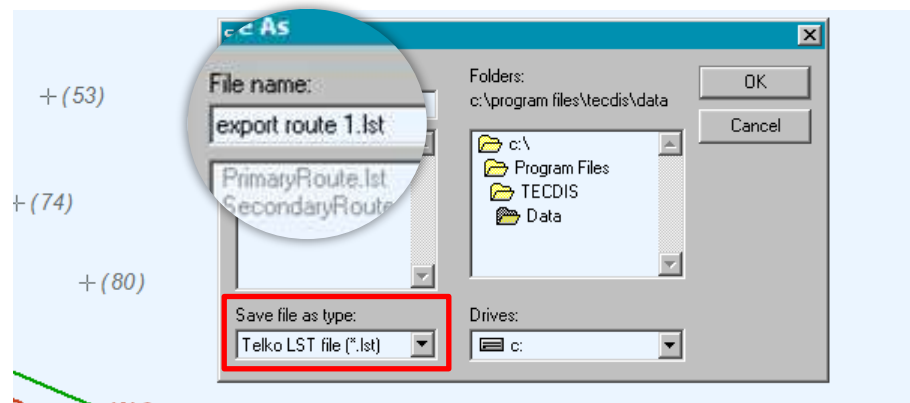
New feature: Navtor NavSync directly on TECDIS

In this release we add support for direct installation and use of Navtor NavSync software on TECDIS units. Contact NAVTOR for further details and installation.



New feature: Multiple formats for saving routes

In the route list window, found using the printer icon, you can now select file format for saving your routes. In addition to the existing TXT file format, it is now possible to select CSV or LST file formats.



To alter the file format, simply edit the file extension. It is set to **.lst** as standard, but can be changed to **.txt** and **.csv**.

NOTE: The dropdown box outlined in red does not change file extension. It is a filter, and shows the different files you have in the selected folder with the same file extension. This is useful when you want consistent file names.

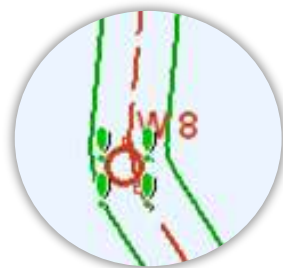
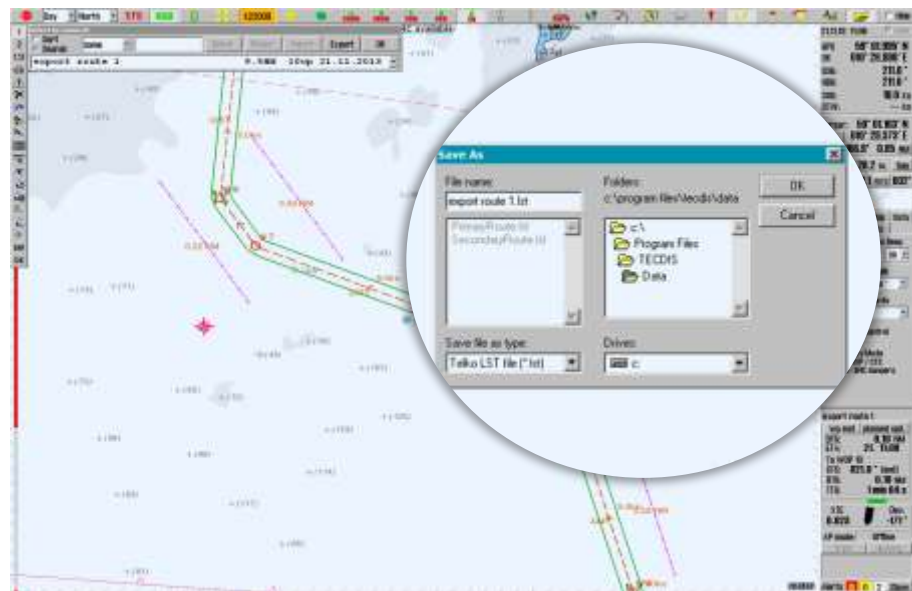
New feature: Chart database synchronization

With an optional *TELKO Synchronization kit*¹ it is now possible to synchronize the chart databases between connected TECDIS units. This means that every update or correction you make, and any charts you load on one TECDIS, now automatically syncs to the other TECDIS.

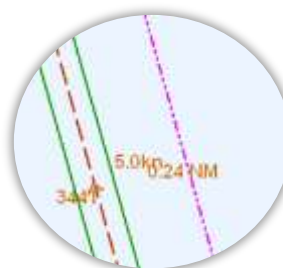
NOTE: TELKO Synchronizer has a separate User Guide and Installation Manual.

Improved: LST export

The route export format **.lst* is now updated to include critical points, temporary great circle waypoints and parallel index lines.



Critical point



Parallel index lines



Temporary great circle waypoints

¹ Purchase required.

Improved: FLIR is now CAM

With the added support for cameras from *Current Corporation*, we have changed the symbols and descriptions for camera operation. In the chart view and in TECDIS Setup, you will see **CAM**, and in the menu you will see **Camera control**.

