

Feature Guide: TECDIS 4.7.x.22

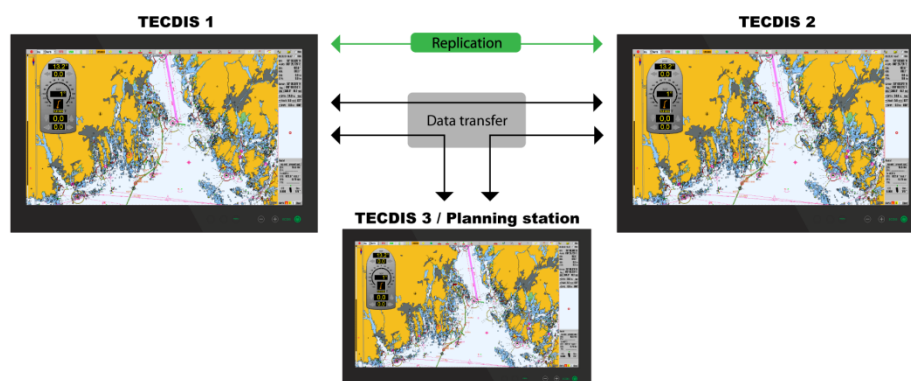
With the release of TECDIS 4.7.x.22 we are providing you with several new features and bug fixes. For a complete list, see the release history on www.telko.no. Here you will also find Feature Guides for previous releases.

Please note that release 4.7.x.20 and 21 are both bug fixes only.

Here is a guide to the main new features to TECDIS in this release:

New feature: Triple TECDIS data transfer

With this release we add support for a third station (TECDIS or TELchart ECS), with manual data-transfer between all units. This allows you to set up a back-of-bridge unit with full route planning. If this is a TECDIS unit, it can also serve as a live backup for the 2 main TECDIS units.



Data transfer is controlled from the data menu in TECDIS, allowing you to select between the different units. The units are named in TECDIS Setup.



Automatic synchronization of routes, if configured, will still only function between TECDIS 1 and TECDIS 2. Transfer to/from the 3rd unit is performed as above.

New feature: Route export to DNV GL Navigator

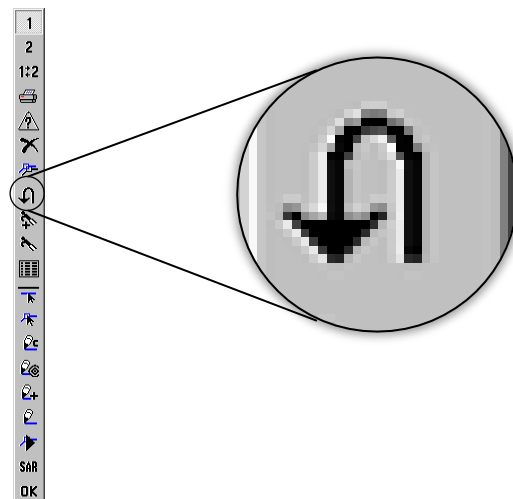
With the addition of route export to DNV Navigator, the planning and route follow-up with a TECDIS system onboard is more powerful than ever before.

You can now export your routes to the **.txt** file format, and then import them in DNV GL Navigator.

New feature: New return route button

How often do you sail the same routes back and forth between destinations?

If your answer to that is *often* or maybe *all the time*, then TECDIS now has a new feature helping you out, allowing you to reverse a route you already have selected.



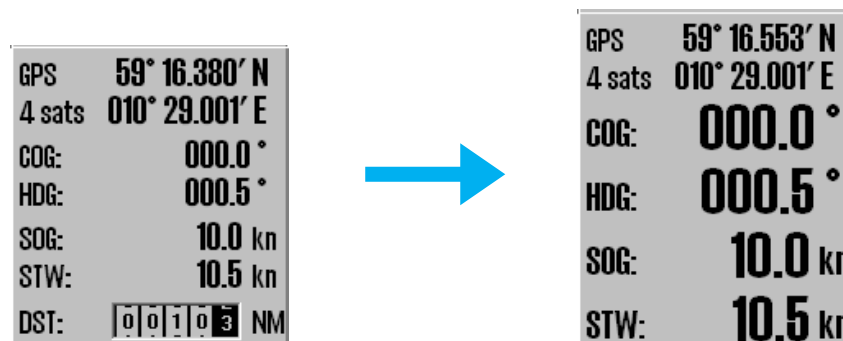
In this release we have added a **return route** button. By pressing it, the waypoint list of your selected route will reverse itself, making the last waypoint the first, and so on.

New feature: Waypoint list automatically scrolls to nearest WP in the chart display

The waypoint list in the route planner tool is now altered, and it automatically scrolls to the waypoint in the list that is closest to the chart center on the monitor. This makes it much easier to review and alter information for single waypoints in your routes.

New feature: Bigger sensor data display

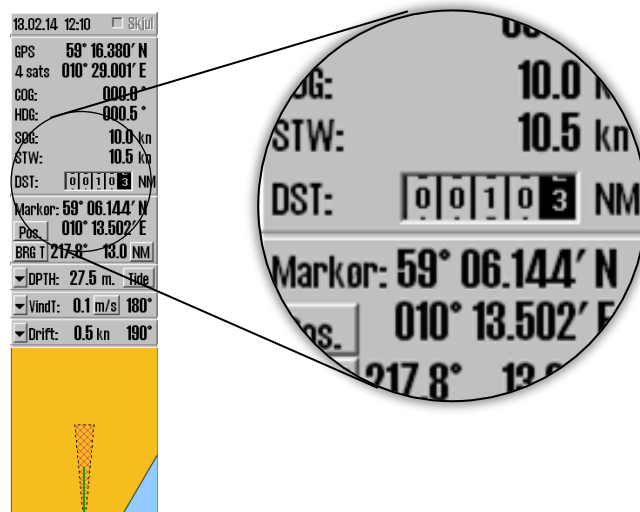
The most important sensor data, COG, HDG, SOG and STW, are all displayed on the information panel in TECDIS. Based on user feedback, we have added the possibility to enlarge the display of those sensor data.



Simply left-click on the panel, over any of the mentioned sensors, and the text will be displayed much bigger.

New feature: Distance log

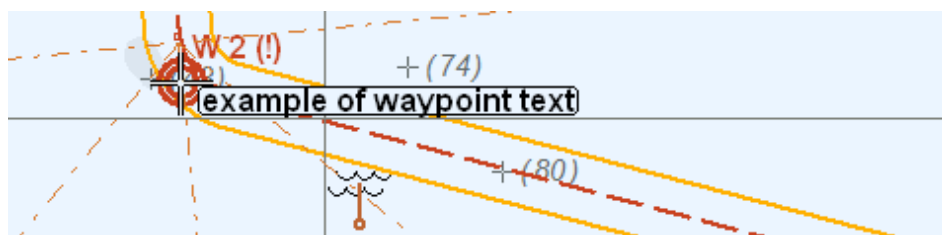
In this release we have added a distance counter. It is placed on the information panel on the right side of the screen. It counts nautical miles traveled since it was last reset, just like the trip counter in cars.



To reset the distance log, simply click it. You will be asked to confirm the resetting.

New feature: Waypoint text display on mouse-over

The text you enter for waypoints, is now displayed on mouse-over. So when you hover the pointer over a waypoint, the behavior is the same as when you hover over a light.



The displayed text can be up to 80 characters, and only the first line of text is shown.

New feature: Display S63 licenses in license list

In addition to licenses from Jeppesen, now also licenses loaded through S63 Chart Loader are shown in the TECDIS license list. This means that if you use S63 licenses, you no longer have to exit the TECDIS program to review them.

The licenses displayed in the license list are color coded:

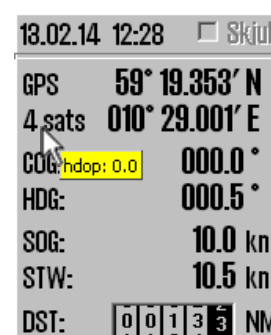
GREEN color is used for valid licenses

YELLOW is used to mark expiring but still valid licenses.
Color is changed 14 days prior to expiration.

RED is used to mark invalid licenses.
They are marked red from the day they expire.

New feature: View HDOP value for the primary sensor in TECDIS

To view the HDOP value for the primary sensor connected to the TECDIS, you can now hover the pointer over the satellite-count/quality field in the information panel.



Important behavior change: MOB and event-marker change places

On the main toolbar, Man over board (MOB) and the Event-marker tool share a button. Based on user feedback, we have now switched the two functions.

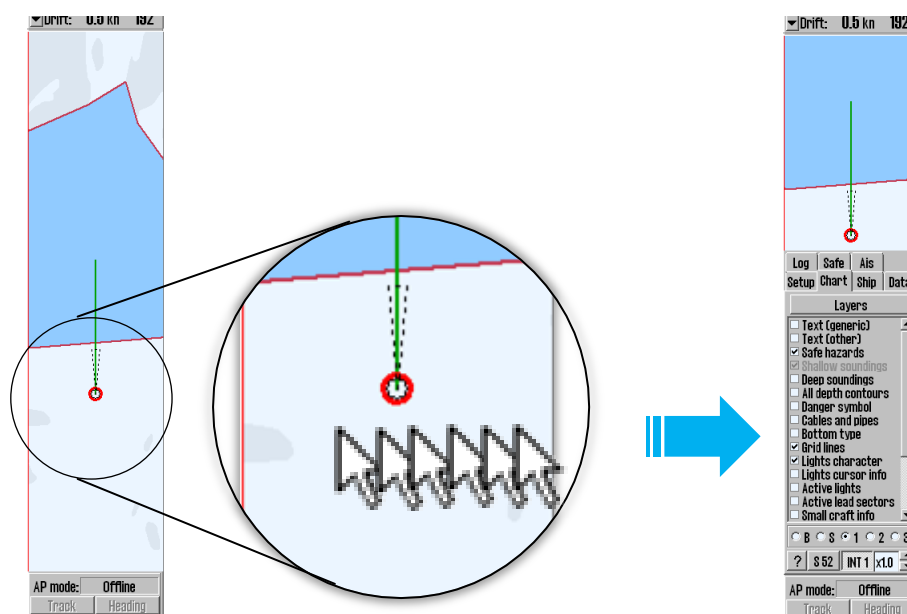


Now, if you left-click the button, you activate MOB. If you right-click, you will set out an Event-marker.

Important behavior change: Accessing the menus directly from the information panel

With the recently added support for widescreen monitors and a left-positioned main toolbar, we have decided to also add a “shortcut” to the menus.

If you have the main toolbar on the left of the screen, it might feel awkward to always go to the bottom left corner to open the menus on the right of the screen.



Now, you have the option of hovering the pointer over the right part of the antigrounding-panel, and the menus will appear. When you remove the pointer from the menu panel, the menu will close after a few seconds and the antigrounding-panel will appear again.

And it is still possible to use the menu button on the main toolbar.

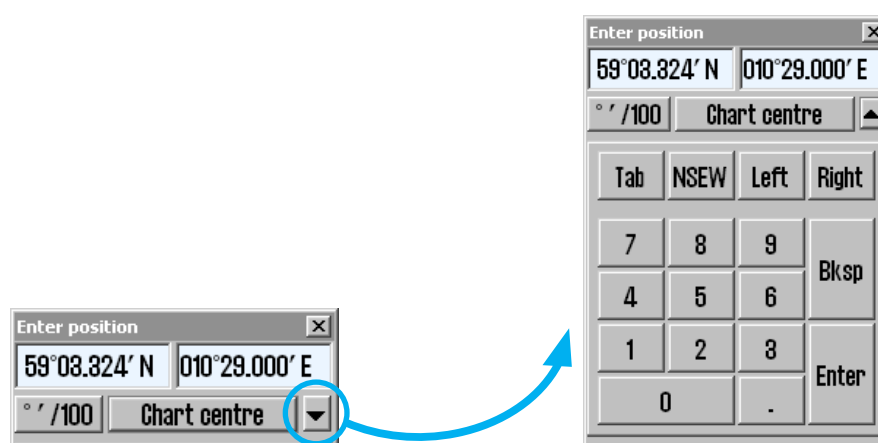
Improved: S63 chart loading

We have also improved the S63 chart loading, making chart loading even more robust. The two main differences you may notice are:

1. You will be notified when chart cells you have permits for have been replaced with new cell named differently. Afterwards, this can also be seen in the license list in Telko Chart Loader.
2. When you attempt loading of an S63 UPDATE CD without having installed the required BASE CDs first, you will be notified.

Improved: On-screen keyboard and edit field in the position window

In this release we have completely redone the Position tool (you find it using the Pos. button on the information panel).



We have added an on-screen keyboard and re-created the entry-field, making it much easier to enter a position using only the pointer. You open the keyboard by simply clicking the downwards arrow in the position window.

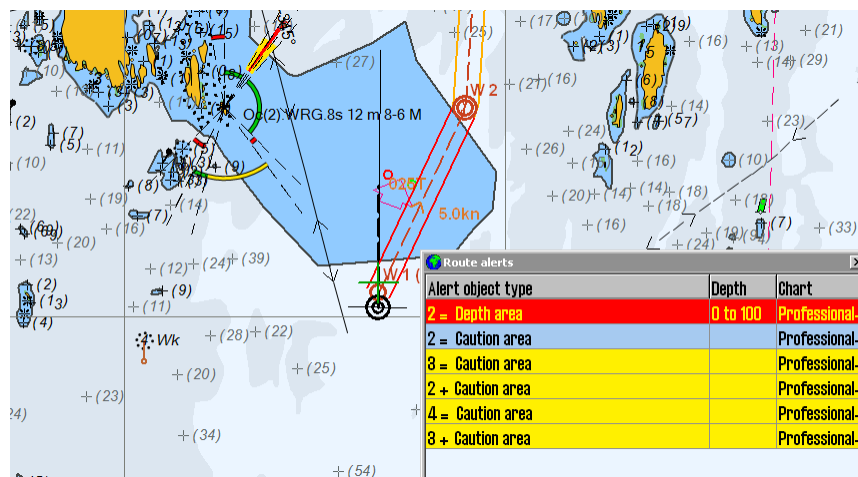
Improved: Caption in the route name field

The route name field was confusing to some users, so we have updated it with a caption: "Name/ID".



Improved: Dangers are prioritized in *route check results*

The route cautions and danger list now prioritize dangers, giving you the most important warnings at the top of the list.



Remember to always review the routes you plan to sail for dangers.

For more information on fixes and minor improvements in this release, see <http://telko.no/site/support/TECDIS/Release-History-4.7.x>