

Feature Guide: TECDIS 4.7.x.24

With the release of TECDIS 4.7.x.24 we are providing you with several new features and bug fixes. For a complete list, see the release history on www.telko.no. Here you will also find Feature Guides for previous releases.

Here is a guide to the main new features and improvements to TECDIS in this release:



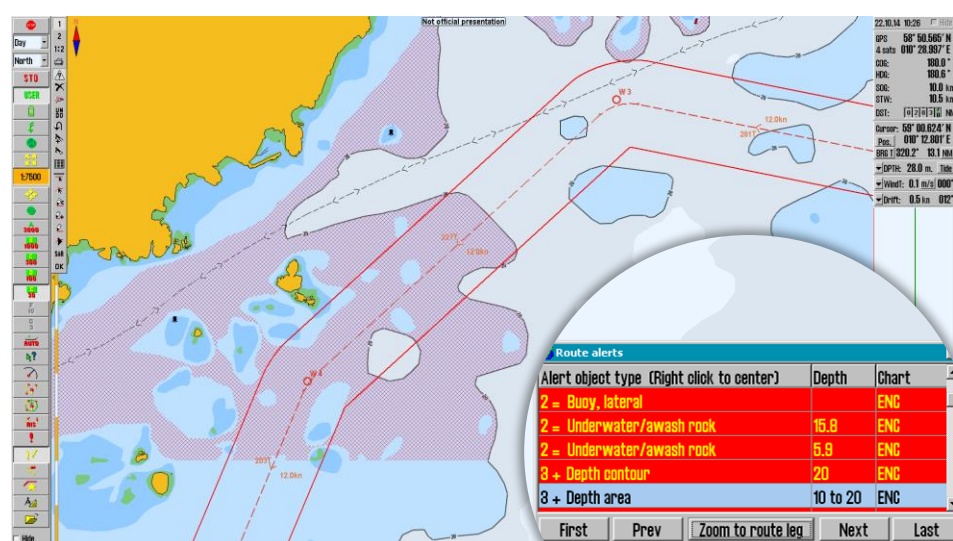
Much requested feature: Undo button

This has been much requested by users, and we can now present a new Undo function. By pressing the **UNDO** button on the route toolbar, you can undo:

- The latest route **deletion** you performed
- The latest route **edit** operation you performed
- The latest route **drawing** operation you performed
- The latest **parallel index line edit** operation you performed

New feature: “Walk the route” when reviewing route alerts

In addition to changing the chart centering, we have added new buttons so that you can **walk the route**. When you open the *alert list*, it automatically scrolls to the route leg *closest to the center of your current chart view*.



When you use the new buttons (**first**, **previous**, **zoom to route leg**, **next**, and **last**) you can walk the route, reviewing the route alerts.

The chart view will automatically re-center around the reviewed route leg, and the chart scale will be changed so that the entire route leg is viewed.

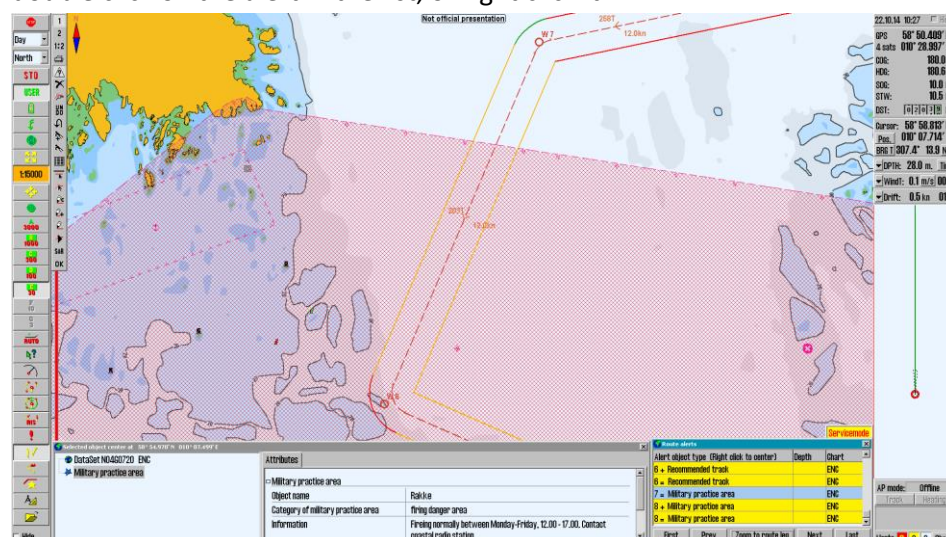
If you move the chart view away from the route leg, clicking **Zoom to route leg** will bring the currently selected leg into full view again.

Important behavior change: Chart centering when reviewing route alerts

In this release we have made an important change to the “Route Alert” list:

- when selecting alerts, the chart is no longer centered on the danger; it stays centered on the afflicted route leg. The selected danger is highlighted in the chart.

To re-center the chart on the danger, you have to press enter on the keyboard, double click on the alert in the list, or right click it.



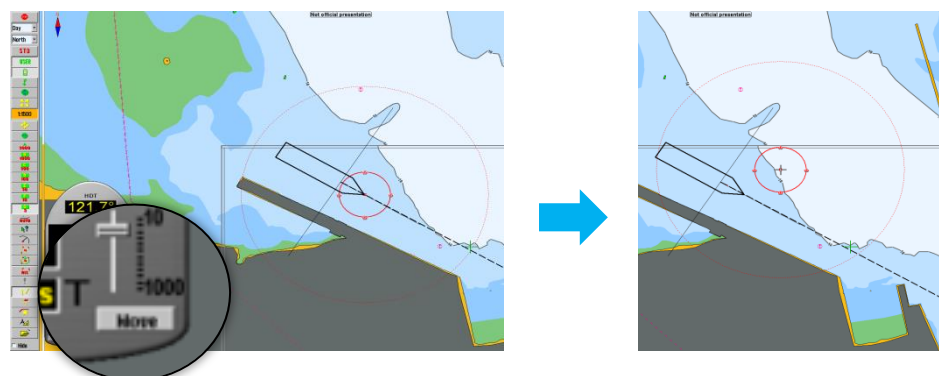
Much requested: Oil rig symbol

As a result of much requests, we have added an **Oil rig symbol** to the TECDIS symbol range. It is found on the expanded symbol list available in the *symbol tool menu* (press one of the lower symbols [ship, anchor] to access).



New feature: Moving the anchor position in Anchor guard mode

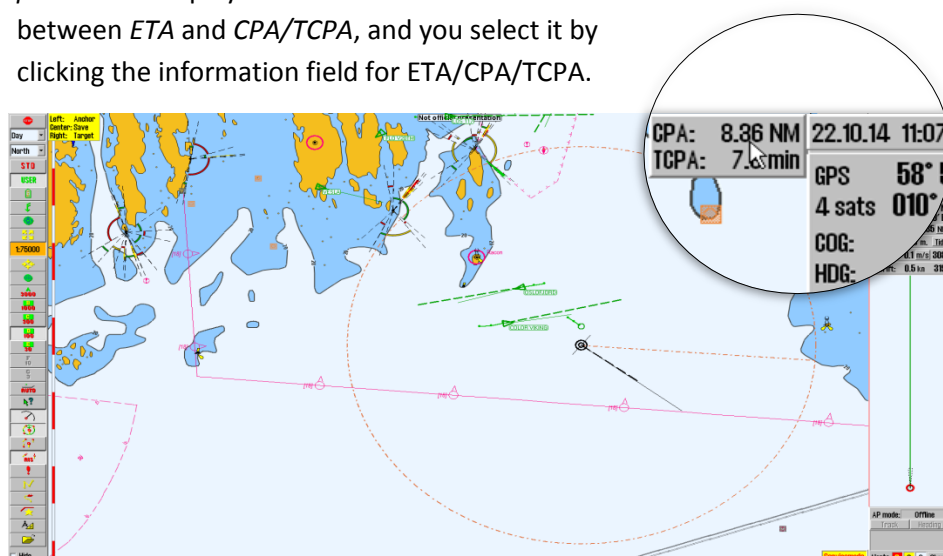
With this release we have added the option of *manually adjusting the anchor position when in anchor guard mode*. This feature is enabled in the Anchor Guard by pressing the **Move** button. The button stays down to indicate that the move tool is active. *To exit the move tool you press the move button again.*



To move the anchor position: left click with the cursor on the center of the guard circle to select it, move the cursor to where you want the new center position to be, and then you place it there by left-clicking again.

New feature: CPA/TCPA info on EBL/VRM cursor point

In this release we have added **CPA/TCPA information** for EBL/VRM *cursor points*. The displayed information alternates between *ETA* and *CPA/TCPA*, and you select it by clicking the information field for ETA/CPA/TCPA.



This field is only available when the vessel is moving.

With this feature the navigator can assess the passing distance to objects in good time before approach.

Improved: MOB symbol undo

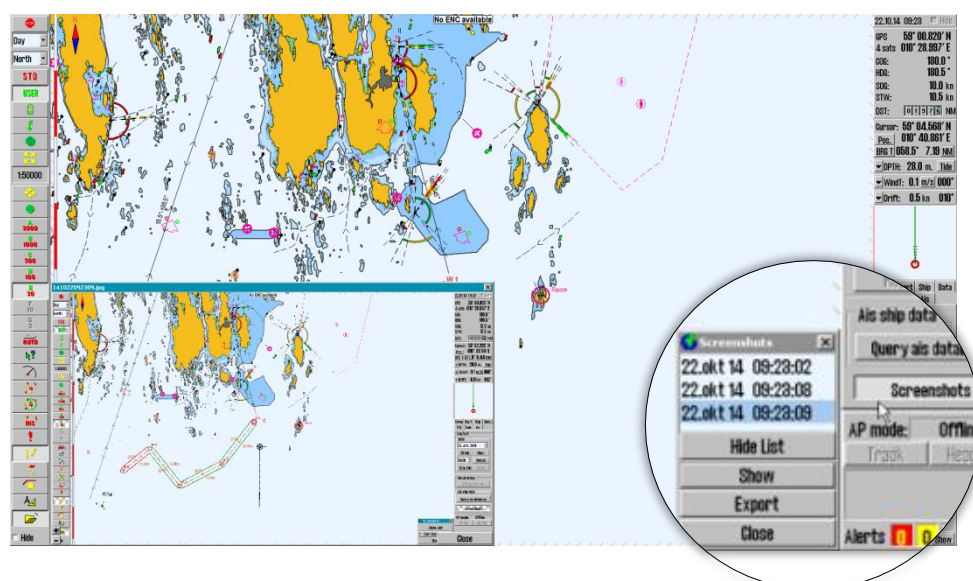
If you have created MOB symbols by a mistake before, you will welcome this improvement to TECDIS.

Now, when you press the MOB-button on the main toolbar, MOB still activates like before, but you have a *20 second grace period* where you can **undo the MOB placing**.

This is done by pressing the **MOB** button again before 20 seconds has passed. This will delete the MOB symbol in the chart, and cancel the bearing to it.

If you wait beyond the 20 second grace period, you have to turn of the bearing and delete the MOB symbol manually. The procedure for this is the same as for other user-created symbols.

New feature: Screenshots in TECDIS



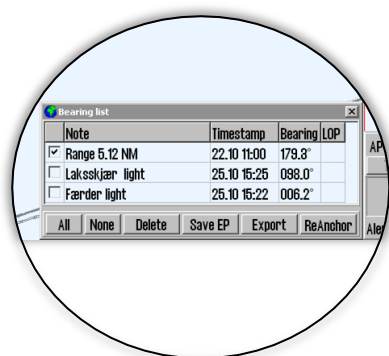
The possibility to take screenshots in TECDIS has been present for several years, but with this release we are remaking it completely. With a new **screenshot menu**, you get a list of previous screenshots, complete with *image preview*.

You also get the option to export screenshots with a user definable destination and name. This makes it much easier to document your voyages, and sending the screenshots to a USB drive for easy sharing.

When exporting, you can select multiple screenshots to export at the same time.

New feature: Bearing list now also contains range for radar bearings

With this release we have added the possibility of saving both the *bearing vector* and the **range** for your radar bearings.

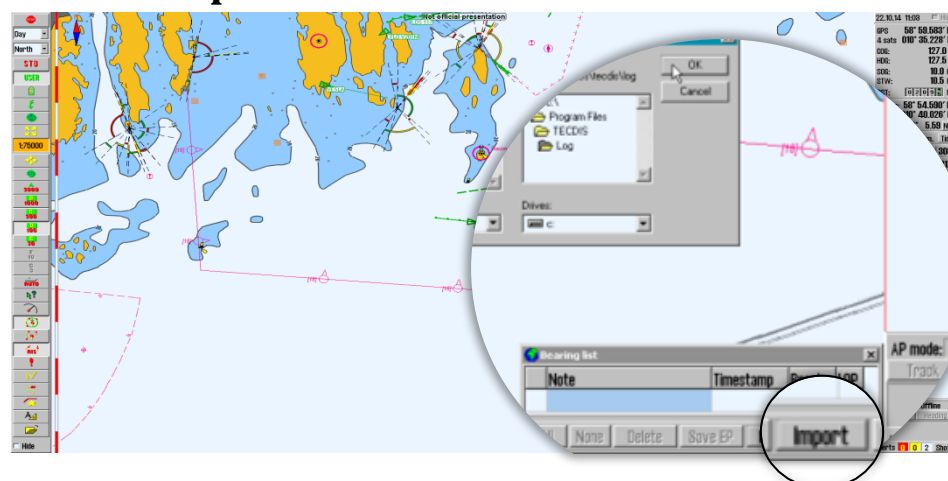


This is done by **clicking the middle mouse button** on the radar cursor in the chart display, while *EBL/VRM* is active.

Range can also be set for older bearings: simply add the text “Range” and press **space** on your keyboard, and a range will automatically be added to the text field for the bearing in the bearing list.

Range is removed from the bearing when you delete the text.

New feature: Exported bearing lists can now also be imported



TECDIS already has the ability to export bearing lines from the bearing list.

In this release, we have added **import** of those bearing lines as well. So now, when the bearing list is empty, *the export button changes to an import button*.

This allows you to find the csv-file with the exported bearings, and bring them into the bearing list once again.

Major improvement: Navtex

In this release we have made several major changes to the Navtex functionality. In addition to adding notes for navtex (see below), we have made the following changes:

- When a navtex message contains more than one position that can be identified automatically, **a navtex symbol is placed in all positions.**
- Navtex symbols in the chart are displayed even if you close the navtex window.

The navtex window has to be closed with:

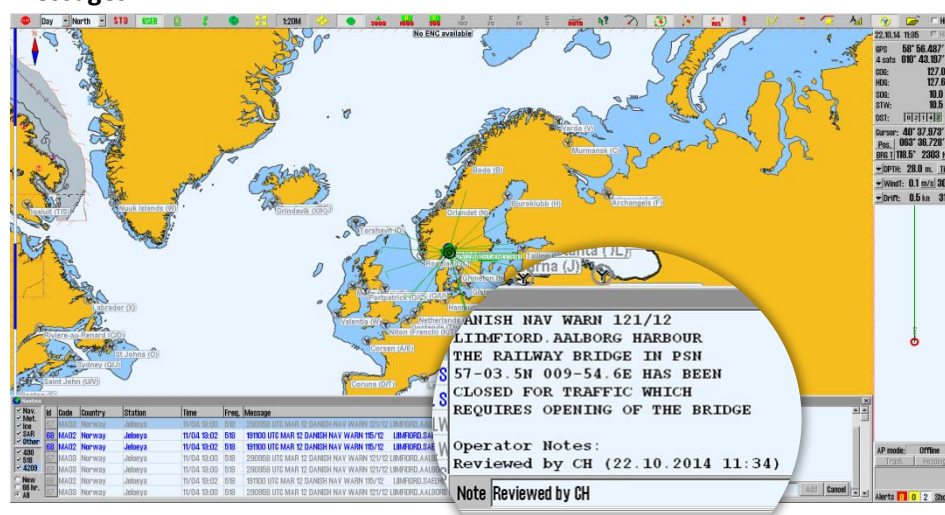
- a) right-clicking on the Navtex button or
- b) clicking the X button in the upper right corner of the Navtex window

for this to work.

- The navtex tool is now properly named **Navtex**.
- The position scan in the navtex tool is greatly improved, giving better results.
- The responsiveness and the user interface behavior of the Navtex list is improved, and you can now **use the keyboard to scroll the list.**

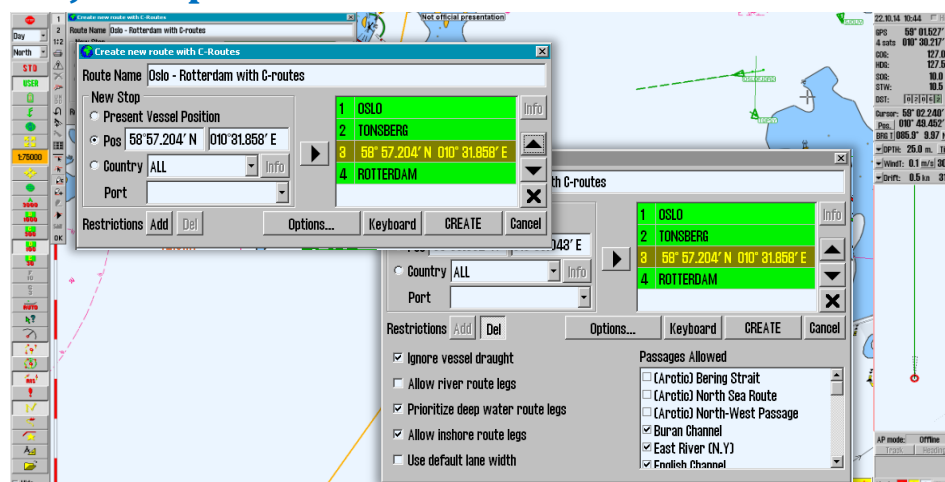
New feature: Add notes to navtex messages

In addition to the major usability improvements for the navtex function, we have added a new feature to it; **you can now add notes for your navtex messages.**



So now you can sign your messages as you read them by pressing the **Add Notes** button. The note is placed at the bottom of the navtex message, under the headline “Operator Notes”.

Major improvement: C-routes

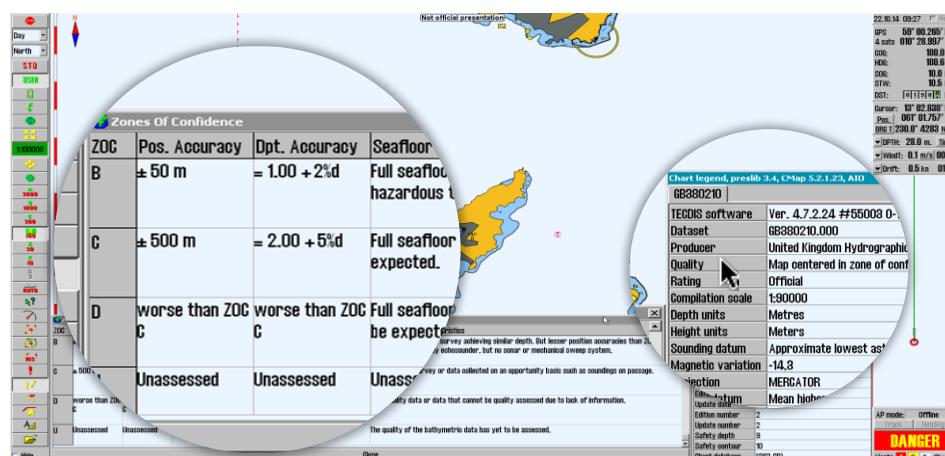


One of the features that has been changed the most in this release is the **C-routes tool**. We have improved several interface features, such as:

- The **“Add to port list”** button has been moved, making it more intuitive.
- You can now **insert positions manually** with the keyboard
- The tools of *adding* and *removing restrictions* have been redesigned, and you do not have to delete them in a specific order. *You will also be informed when creating the route that all restrictions have to be set before the route is finalized.*

New feature: Zone of Confidence integration

The quality of different ENC charts is divided in different “Zones of Confidence”. The table for this is now integrated in TECDIS, and is available from the chart legend for each chart.



To access it, press the chart **Quality** value in the *Chart Legend*.

The chart legend is available from the *Chart* menu, by pressing the **“?”** button.



Creators of TECDIS

New feature: Cycle cells in the waypoint dialogue with the TAB button

When editing values in the *Waypoint window*, you now have the option to cycle faster between the different cells of each entry. With the added support for cycling with the **TAB** button, you can easily edit the waypoint parameters solely on the keyboard.

To cycle backwards: press and hold the *Shift* button while pressing the *TAB* button.

Improved: Route Check now excludes unofficial Professional+ overview charts

Route checking has to be performed with the best available charts for any region. Some regions without ENC coverage benefit from route checking against Professional+ (P+). However some information in the overview charts bundled with P+ charts have caused unnecessary route alerts, such as erroneous safety contour alerts. As a result users may experience that their routes are turning red unnecessary.

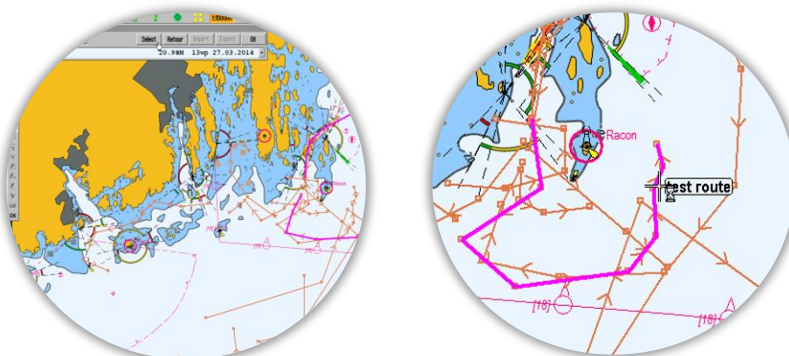
So in this release we have excluded the following overview charts in P+ from the route check:

- Scale 1:3 000 000
- Scale 1:20 000 000
- The improved overview charts

These overview charts no longer impact anti grounding alarms or route checking alarms.

Improved: Route selection preview

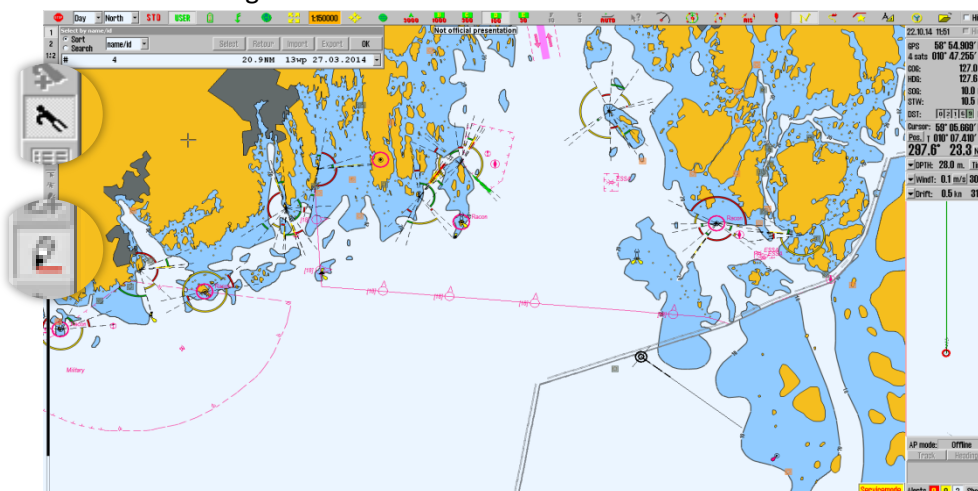
One major improvement that will affect all users is the improvement made to the *route selection preview*. The steps to select a route have not changed, but when you select a route, **it is now highlighted in the charts in magenta**.



This happens when you *hover over the route in the chart*, and *after you have selected it from the dropdown list*. This gives you a visual confirmation that the chosen route is the correct one.

Improved: Preview of routes

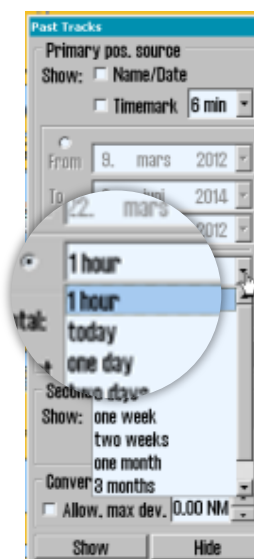
TECDIS shows you a preview of previously made routes in the charts, when selecting routes, and greyed out while editing routes. In this release we have added the option to disable the route preview for the route selection tool and the route drawing tool:



1. When you are selecting your routes, you can now **disable the route preview by right clicking the route selection button** on the route toolbar while selecting routes.
2. When you are editing your routes, you can now **disable the route preview of previously made routes, by right clicking the route edit or route draw button** on the route toolbar while editing.

To re-enable: perform the same operation again.

New feature: Vessel track from latest hour



This feature has been requested by vessels performing surveys, which sail in the same waters often several times per day.

So now we have added the option of displaying the vessel track from the last hour. You will find this new option in the Past track tool, and it is activated by pressing the **1 hour** button.

For vessels that require other track resolutions (less than one day):

The track length is customizable (by service technician only), contact Furuno for more information.

New feature: Modify parameters with the keyboard

This feature gives you an alternative way to input data in TECDIS. We have added support for editing:

- Wheelover distance
- Dead reckoning
- Search and Rescue
- Speed, lane, turn and time-zone in the waypoint dialogue
- Draught
- Speed in the ETA calculator

with the keyboard.

So in addition to scrolling the values on screen, *you can now enter new numerical values directly with the keyboard*. This functionality also supports the numerical keys on TECDIS Keypad.

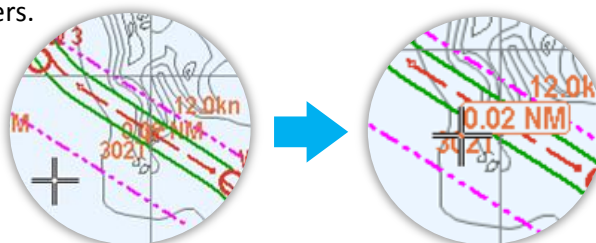
New feature: Attach images and text notes simultaneously to waypoints

One improvement that has been requested and is now in place, is the ability to simultaneously attach both images and text notes to a waypoint.

It can also be done for other user created objects, such as symbols.

Improved: Parallel index line readability

Based on feedback from users we have added a **mouse-over label** to *parallel index lines*, to improve readability of range values. This is especially useful in coastal waters.

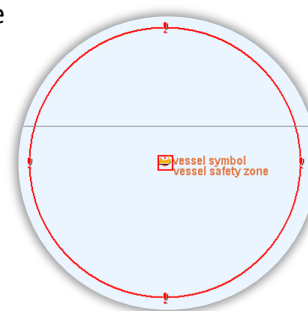


To view the label, simply *move the cursor to the parallel index line*. The label is displayed in the chart, but on top of all other information, with a white background and a frame around it.

Improved: Object label readability

Based on feedback from users we have improved the object label readability when several objects are stacked on top of each other.

The labels for areas are now placed below labels for points and symbols, making it easy to read. *The example to the right is of a vessel symbol and a safety zone area.*



Improved: The File type selection

The **file type selection** when exporting routes has been upgraded in this release. In previous versions, the “File Type” dropdown box has been independent of the file extension. **This is now changed, so that when you select a file type in the dropdown box, that file type is the extension the file will be saved with.**

So you no more have to manually change the .txt, .lst or .csv extensions, you simply select it in the dropdown box.

Minor behavior change: Displayed information on 19” monitors

Because of information overlaps on smaller monitors, we have set an information priority for smaller monitors in TECDIS.

As a result, the **DST odometer** is not available *while in route monitoring mode* when 19” monitors are used. On the other hand, both the cursor range and bearing is always visible.