

# Feature Guide:

## TECDIS 4.7.x.26

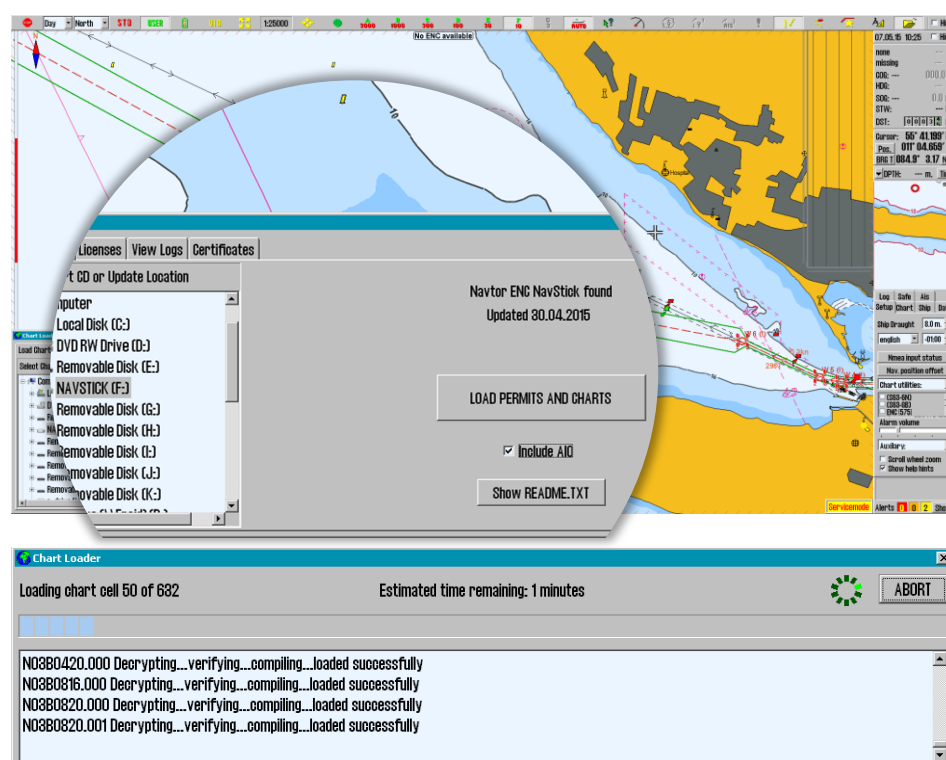
With the release of TECDIS 4.7.x.26 we are providing you with several new features and bug fixes. For a complete list, see the release history on [www.telko.no](http://www.telko.no). Here you will also find Feature Guides for previous releases.

Here is a guide to the main new features and improvements to TECDIS in this release:

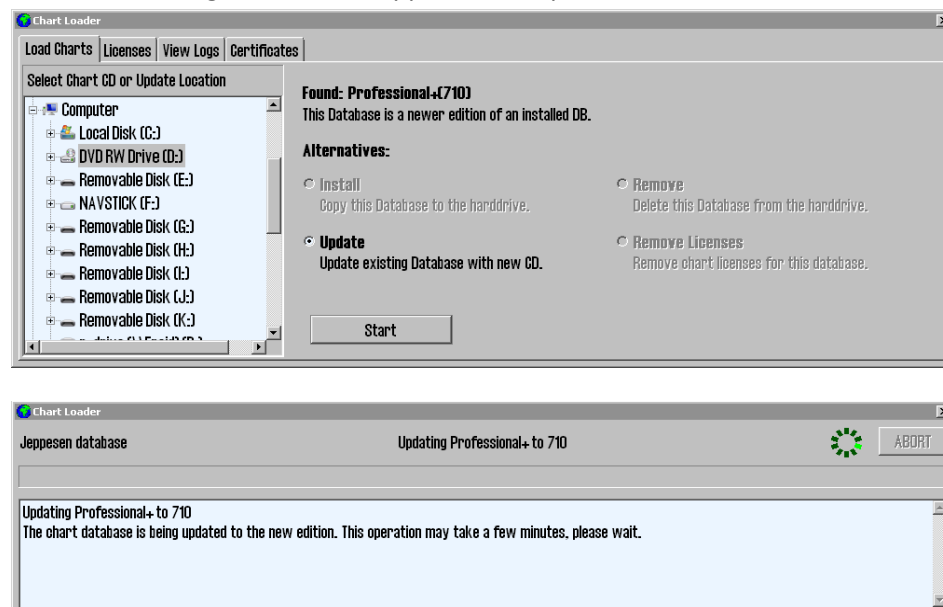
### New feature: Chart loading in TECDIS

The main feature of this release is chart loading in the TECDIS program itself. So now you can update your chart database *without* exiting TECDIS, and as long as you have more than one database, you will have a chart view while the database is updating.

When you have Navtor AVCS with AIO, you can choose to have the AIO data installed in the same session. Chart loading in TECDIS is supported for all chart formats and services; **Jeppesen C-Map, S63** and **S57**. The interface is based on the *S63 Chart Loader*, and has been tweaked for optimum performance.



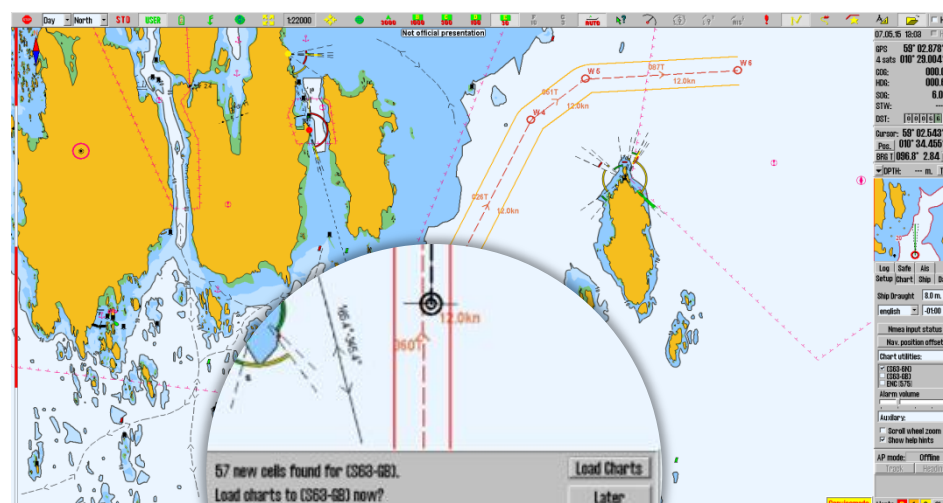
The chart loading window for Jeppesen C-Map charts:



## New feature: 1-click chart install/update

In addition to chart loading in TECDIS, we are adding **1-click chart install/update** in TECDIS as well. *This is supported for all charts except S57.*

When charts have been loaded manually the first time, you can later just insert new chart media (Navstick, C-Map DVD, S63 base media), and the system will auto-detect if there are updates or new chart cells. When you have Navtor AVCS with AIO, the AIO data will also be updated when you update the charts.



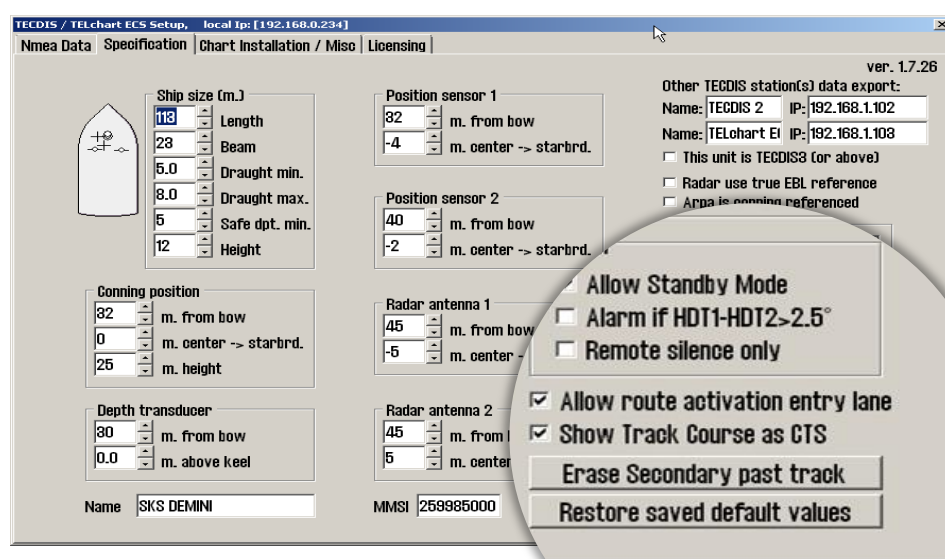
If the chart media is on a network drive, TECDIS will check for updates every hour.

**Note:** Chart licenses have to be entered manually. The exception is if you are using *Navtor Navstick* or *Nautisk exchange sets* with bundled cell permits.

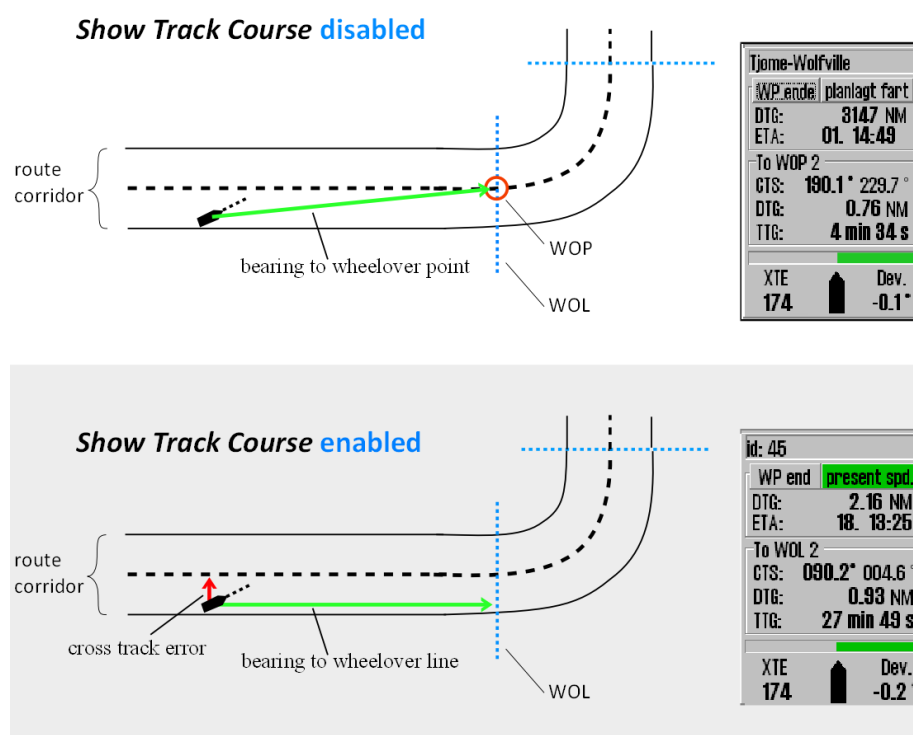
## Important behavior change: Course to Steer

In version 25, due to Track Control system certification, we had to change the way TECDIS handles **Course to Steer** (CTS). In this version, after feedback from our users, we have found a way to reintroduce the previous way of displaying CTS. This is only available to users without Track Control.

When the checkbox **Show Track Course as CTS** in *TECDIS Setup* is disabled, *Course to Steer* in the *route steering information box* is now calculated to the wheelover point (WOP).



The following figure shows the difference between the two options:



## Improved: ETA list now displays TTG and DTG

With version 4.7.x.25 we made big changes to the ETA tools in TECDIS, and in version 26 we have improved these tools with the addition of TTG and DTG.

In the ETA list, in addition to showing the ETA, you can now toggle to view Time-To-Go (TTG) and Distance-To-Go (DTG) as well. You toggle by right-clicking with the cursor placed over the ETA title.

WP ETAs	
present spd.	
All	ETA
2	07. 12:37
3	07. 12:41
4	07. 12:54
5	07. 12:59
6(end)	07. 13:09

WP TTGs	
present spd.	
All	TTG
2	8 min
3	12 min
4	25 min
5	30 min
6(end)	40 min

WP DTGs	
present spd.	
All	DTG
2	0.82 NM
3	1.24 NM
4	2.57 NM
5	3.02 NM
6(end)	4.07 NM

The different ETA, TTG and DTG windows.

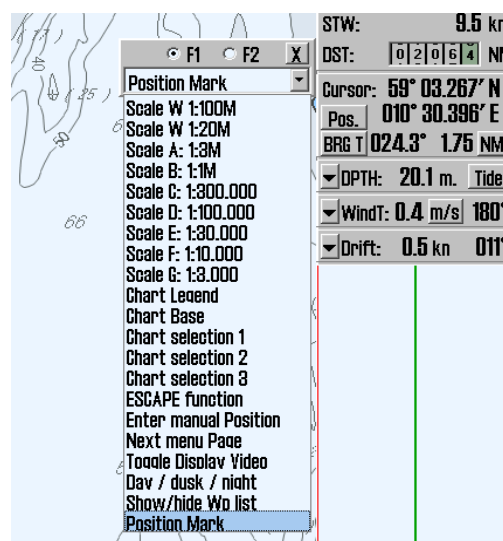
We have also fixed a small bug that caused the last waypoint to be displayed as only (end) in the list, now any text you have added to that waypoint will be displayed as well.

One last thing we have done is to change what text is presented for the waypoints. From now, only the first line of text for each waypoint is presented. So if you have a lot of notes for each waypoint, simply place those notes on line 2 and below, and the notes will not appear in the ETA list.

## New feature: Position mark added to F1 and F2 keys on TECDIS Keypad and Furuno RCU-018

Users of the TECDIS Keypad and Furuno RCU-018 keyboard have asked for the option to set out position marks with the F1 and F2 buttons on those keyboards. We think it is a good idea, and we are adding it in this release of TECDIS.

The option is configured in the "Auxiliary" dropdown-list in the Setup menu in TECDIS.



## Behavior change: Radar overlay is limited to one radar

This change is made to improve radar overlay stability. From now on, Radar 1 (configured in TECDIS Setup) will be used for radar overlay.

This only relates to radar image overlay. Other radar features are unaffected by this change.

## Improved: S63 Chart Loader

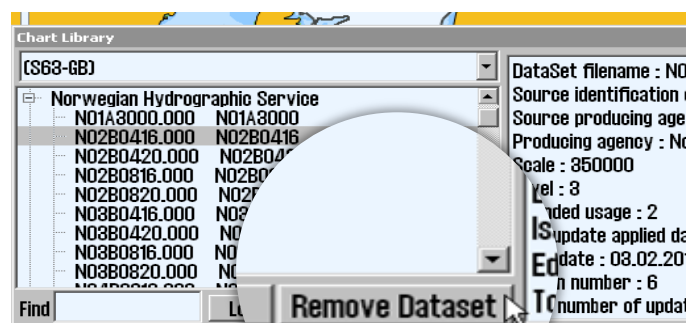
The S63 Chart Loader program has been revised in this version of TECDIS, and now features:

- Fast, automated pre-selection of chart cells with valid licenses for S63 Media format. So now all chart cells with cell permits are preselected when you insert the S63 Media format.
- Faster loading of S63 Media format. The startup time for S63 chart loading has been optimized, giving you faster chart loading.
- AIO-loading integrated with Navtor AVCS chart loading.

All features of chart loading in TECDIS and in S63 Chart Loader are now the same (exception is automatic detection and 1-click install)

## Improved: Option to remove S63 datasets in the Chart Library

In this release we are also improving one of the functions in the Chart Library. In earlier versions of TECDIS you could remove S57 datasets here. With this release, we are adding this option for S63 datasets.





*Creators of TECDIS*

### **Bug fix: Time zone setting in Windows 7**

An error in the time zone tool in TECDIS has been corrected in this version of TECDIS. This error has only affected TECDIS systems with Windows 7 (TECDIS 2424), and the result of the error was that the clock in TECDIS could not be adjusted for different time zones.



### **Bug fix: Radar overlay display error**

Some users have experienced a display error with radar overlay in version 25. This error could affect chart display and system stability. In version 26, this error has been fixed.