

Feature Guide: TECDIS 4.7.x.32

With the release of TECDIS 4.7.x.32 we are providing you with some feature improvements, and a few bug fixes. For a complete list of changes, see the release history on www.telko.no. Here you will also find Feature Guides for previous releases.

Note that this Feature guide is the newest documentation for your TECDIS system with software version 4.7.x.32. If you find any conflict between your TECDIS User Manual and this Feature Guide, you should perform any operation according to the guidelines in this Feature Guide.

Improvement: Dual TECDIS Keypad



The biggest feature improvement in this release is the addition of a second connected TECDIS Keypad. This allows vessels with limited space to operate their primary TECDIS from two locations.

Improvement: Time and speed limit for Standby Mode

You can now limit Standby Mode with the following parameters:

Time (min): Add a maximum time for Standby Mode before deactivation.

Speed (knots): Add a maximum speed for Standby Mode before deactivation.

This has to be added by a service technician.

Improvement: Support for NP5500 autopilot software revisions

In this release we have added support for several software revisions for the NP5500 autopilot. If you have updated your Autopilot, then you also need to update your **Autopilot software revision** number in the Track Control panel in TECDIS Setup to match.



Creators of TECDIS

Here are some features from the last releases you do not want to miss:

Important improvement: User interface

The biggest changes in this release are the design changes to make TECDIS compliant with IEC 62288 Edition 2. Several parts of the user interface in TECDIS has been improved, most noticeably the color use. All colors are now based on calibrated colors from the IHO palette.

Main Color	Status	Examples of use
Green	Positive attention	ETA set to current speed Scale when chart in compilation scale Chart license valid
	Selected	Current waypoint in waypoint list Selected sorting criteria in AIS target list Selected option in drop down menus
Yellow	Attention	Service mode Chart license expiring Hint texts
	Low integrity	Scale when chart is overscaled
	Caution	Alert cautions
Orange	Invalid	Invalid turn in waypoint list Chart license expired
	Warning	Alert warnings
Red	Danger	Grounding dangers No go areas Dangerous targets
	Alarm	Alert alarms

The following status color is used on text, user interface foreground elements and icons only:

Main Color	Status	Examples of use
Gray	Unavailable	Unavailable scale buttons Disabled buttons and checkboxes Sensor data derived from dead reckoning

Note that when the status colors are **statically** used in icons, user interface symbols and graphically presented information (such as graphs or direction plots), the color does not impart status information.

When color use in such information **dynamically** changes to one of the status colors, the associated meaning of the status color may be assumed.



Creators of TECDIS

Important behavior change: The Standard (STD) button



The Standard/STD button in TECDIS **previously** changed to standard chart presentation and removed all auxiliary information such as windows, symbols, tracks, targets and layers.

Now, due to changes in the rules, this is split into two functions:

Left click on the STD button	Changes to standard chart presentation. Only chart settings are affected.
Right click on the STD button	Hide all auxiliary information displayed over the charts, except own vessel and selected route

This allows you to quickly check the charts in their standard presentation as before, but you will not at the same time remove the windows and functions you are using unless you want to.

Important behavior change: Chart overscale/underscale notification

As part of the new interface color use, the chart over/underscale notification in the main toolbar has been improved. This is the new design of the notification:

Chart overscale	Compilation scale	Chart underscale
1:100 000	1:120 000	1:300 000

Important behavior change: No CPA alerts

In this release there are several notable changes to the CPA functionality in TECDIS. Most important; **CPA raises no alerts in TECDIS as of this version.**

In addition to no CPA alerts, the following has been changed:

- CPA is calculated for AIS targets and radar reported AIS targets only. For radar tracked targets, CPA reported by the radar is used.
- CPA is not calculated if own vessel or target is missing COG/SOG

Important behavior change: Alert system

Based on feedback from DNVGL we have updated the alert system in TECDIS with the following changes:

- *Lost monitor serial connection* is now **Lost monitor control and alert buzzer**

The following changes affect new installations only. Alerts are unchanged on update of an existing installation, but the changes may be activated by a service technician:

- *Route critical point* is now a **Warning** (cat A)
- *Lost sensor COG/SOG 1* alert is removed
- *Lost sensor COG/SOG 2* alert is removed
- *Lost sensor Heading 1* warning alert is only activated if the system cannot automatically change to a valid alternative sensor.



Creators of TECDIS

- *Lost sensor Heading 2* warning alert is only activated if the system cannot automatically change to a valid alternative sensor.
- New *Lost sensor Heading 1* caution alert is activated when the system detects a heading 1 sensor loss and automatically changes to a valid alternative sensor.
- New *Lost sensor Heading 2* caution alert is activated when the system detects a heading 2 sensor loss and automatically changes to a valid alternative sensor.
- *Lost sensor Relative Wind* alert is now a **Caution**.
- When in standard (STD) mode, the following alerts will not appear:
 - Dynamic licensing update deadline
 - Dynamic licensing out of credits
 - Chart licenses expired (over 50%)
 - Dynamic licensing payment is active
 - Dynamic licensing credits low
 - Chart licenses expiring (over 50%)
- Some ECDIS standard alerts have new *ALF* identifiers. The new identifiers can be found in the **Alert list for TECDIS** (available on demand from Furuno Norway).

New feature: Target association

TECDIS now adds target association between radar and AIS targets. If targets received from both the AIS and the radar share **MMSI** number, only one target will be displayed in the chart, and both the radar and AIS target information is displayed for that target.

In the target window, a new button **Associated** is available, allowing you to switch information display between the different targets.

By default any target with both radar and AIS sources will be displayed as AIS targets. The default setting can be changed in the new *TGT/target* menu, by deselecting **Show associated as AIS**.

New feature: Targets from radar with new TTD sentence

TTD is a new nmea sentence for targets from radar. To accommodate it in TECDIS, we have made some changes to both TECDIS and TECDIS Setup.

TECDIS	All references to <i>arpa</i> has now been changed to radar or targets
TECDIS Setup	<ul style="list-style-type: none"> • <i>Radar arpa 1/Radar arpa 2</i> have been renamed to Radar targets 1/Radar targets 2 • For Radar target 1 and 2 you can now select between TTM and TTD sentence types (<i>the sentence type has to be identical on both radar inputs</i>) • The option <i>Arpa is conning referenced</i> has been changed to Radar targets are conning referenced

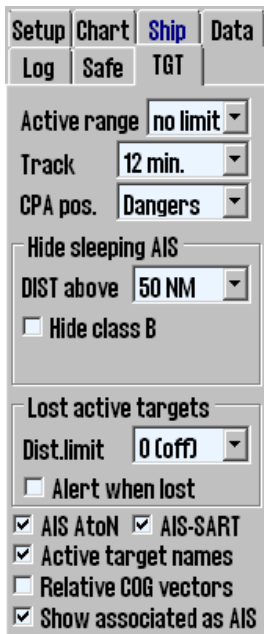


Creators of TECDIS

Improved: AIS menu is now TGT menu

As many improvements and new features in this release are related to target handling, we decided to overhaul the AIS menu. It now controls the settings for both AIS and radar targets, and a name change was needed.

The redesigned Target/TGT menu offers more customization of target settings than before, in a simpler interface. Here are the menu functions described:



Function	Description
Active range	Filters which targets are shown as active based on the distance to own vessel. This makes it possible to view all targets with course, COG-vector and past track line. To remove the distance limit and display all targets as active, select No limit . When targets are outside the distance limit, they will change to sleeping mode. This can be overridden in the target window, by selecting Activate .
Track	Track specifies the length of the past track lines for the targets. It is specified in minutes of travel.
CPA pos.	Manual: Displays CPA positions manually for each target from the target window. If the target window is open, the CPA position will be displayed regardless if the CPA is in the past or future. When it is closed, only future CPA will cause CAP position to be displayed. Dangers: Same as above, but in addition CPA position will be displayed for all targets the radar classifies as dangerous. All active: CPA position is displayed for all active targets with CPA in the future. If you open a target window, only the CPA for that vessel will be displayed, and CPA positions will be displayed even if CPA is in the past.
Hide sleeping AIS	
DIST above	Hides sleeping AIS targets beyond this radius
Hide class B	Removes the display of all class B targets beyond the active range distance setting
AIS Lost active targets	
Dist. Limit	Select if the function should be on or off, and the distance limit for Alert when lost
Alert when lost	Turns on an alert when active AIS targets are lost
AIS AtoN	Turns on the display of Aids to Navigation (AtoN) symbols
AIS-SART	Turns on the display of Search And Rescue Transmitter (SART) symbols
Active target names	When selected, displays target names on all active targets
Relative COG vector	Sets all AIS target COG vectors to be relative to own vessel movement. If not selected, targets use true course and speed.
Show associated as AIS	This displays targets associated with both AIS and radar as AIS targets.



Creators of TECDIS

Improved: New presentation of cursor info, EBL/VRM and distance/course for route/line/circle

In this release you will experience a major overhaul of the information panel in TECDIS. We have updated both functionality and look of the cursor info field. To improve the functionality of the different functions embedded in this small field, we have split the information in three panel sections:

Cursor info panel:

Cursor position and bearing/distance from own vessel position	Cursor position and enlarged bearing/distance from own vessel position	Cursor bearing/distance from own vessel position	Enlarged cursor bearing/distance from own vessel position

These panels always show the bearing and distance from the vessel to the cursor. The four cursor panels share the same location, and you toggle between them by clicking on the panel itself. One of the panels is always displayed.

EBL/VRM panel:

Bearing and distance for the EBL/VRM tool	Enlarged view of bearing and distance for the EBL/VRM tool	Configurable bearing and distance for the EBL/VRM tool

The three EBL/VRM panels share the same location, and you toggle between them by clicking on the panel itself. The panels are only displayed when the EBL/VRM tool is activated.

The third panel allows you to set a bearing that is not attached to the cursor. You can modify the bearing and range/distance with the arrow buttons, by text input, and the bearing can be set with the bearing circle; click and hold your cursor on it and when you move the cursor the bearing moves as well.

Route/line/circle panel:

	The course and distance from the circle centerpoint or last plotted point on lines/routes. The route/line/circle panel is non-configurable.

New feature: TECDIS sends screenshots to VDR

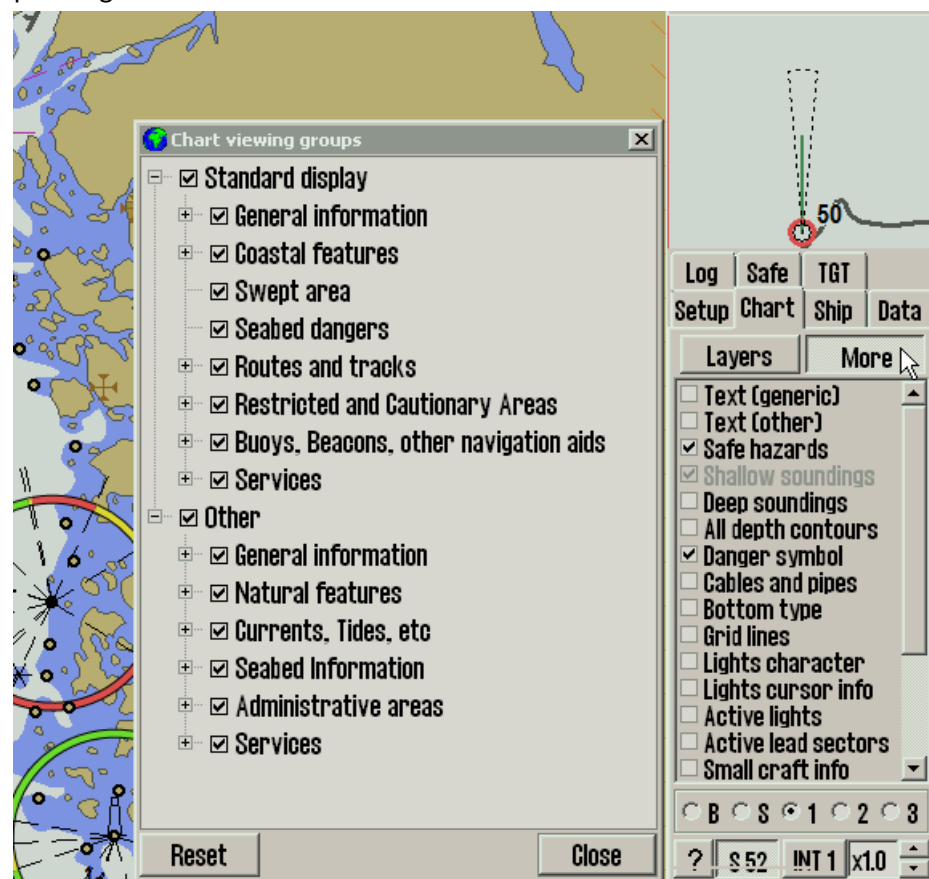
This function is mostly relevant for newbuilding. With the separate program **Telko Screensender** TECDIS is now capable of transmitting screenshots to the VDR in the *IEC 61162-450* network. These screenshots also include conning screens if configured.

Note: This has to be configured by a service technician. A separate installation guide is available on request (*quick installation guide – Telko Screensender 1.0*)

New feature: IHO viewing groups

In this release we are adding IHO viewing groups. The IHO viewing groups are a way to separate charted information in to separate groups, giving the user a way to select what information he/she wants to display.

The selection tool for the viewing groups is accessed from the *Chart menu*, by pressing the **More** button.



Note: This is only available for TECDIS installations with version **4.7.2.30** and higher. TECDIS 4.7.1.xx is not supported, and must be upgraded for using a separate update file.

Also note that this is only available in the user defined **1, 2** and **3** presentation modes, not the *Base* and *Standard* modes.



Creators of TECDIS

Caution: Invalid sections of TECDIS User Manual

The following sections in TECDIS User Manual version 3.28 are deprecated as a result of this update. The sections contain incorrect information when you have performed this update, and should not be used for TECDIS functionality reference purposes.

Section	Note
All chapters and Appendixes	All screenshots may contain wrong color use. Refer to user interface color changes detailed on page 1 of the Feature Guide
Chapter 4.5.2 Alert list	Only the reference to Ship CPA alarm is invalid (paragraph 4)
Chapter 4.5.3 Alarm texts	Reference to Ship CPA alarm and the alert system changes detailed on page 3 of the Feature Guide
Chapter 7.8.3 Danger CPA all Targets	Entire subchapter

Note that the chapter numbers in the list above may be incorrect if you are currently using an older version of the TECDIS manual than the last issued version, named TECDIS User Manual 3.28 EN. Also note that this caution will not be relevant for TECDIS User Manual 3.30 EN or newer.

Document revision history

1.0	18.05.2016	Initial release	Cato Haugland
-----	------------	-----------------	---------------